



## Pell Street, SE8

£550,000

Situated on the top floor of this modern development, this two double bedroom flat is in fantastic condition and boasts a large open plan kitchen/ living space, two bathrooms, storage, a huge private terrace, concierge & gym facilities.

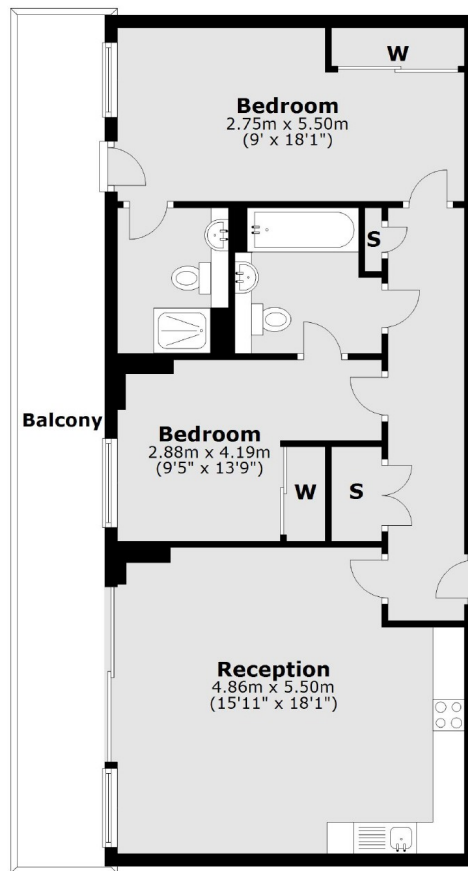
Norlem Court is located only 0.5 miles from Surrey Quays station and 0.8 miles from Canada Water station offering excellent transport links to all of London. A wide range of shops, cafés and restaurants are close by.

### Features

- Two Double Bedrooms
- Two Bathrooms
- Excellent Condition
- Chain Free
- Private Terrace
- Gym Facilities & 24 Hr
- Concierge
- Valid EWS1 Form

# Pell Street, London, SE8

## Sixth Floor



Main area: Approx. 72.0 sq. metres (775.2 sq. feet)  
Plus balconies, approx. 20.1 sq. metres (216.7 sq. feet)