



Earls Way, SE1

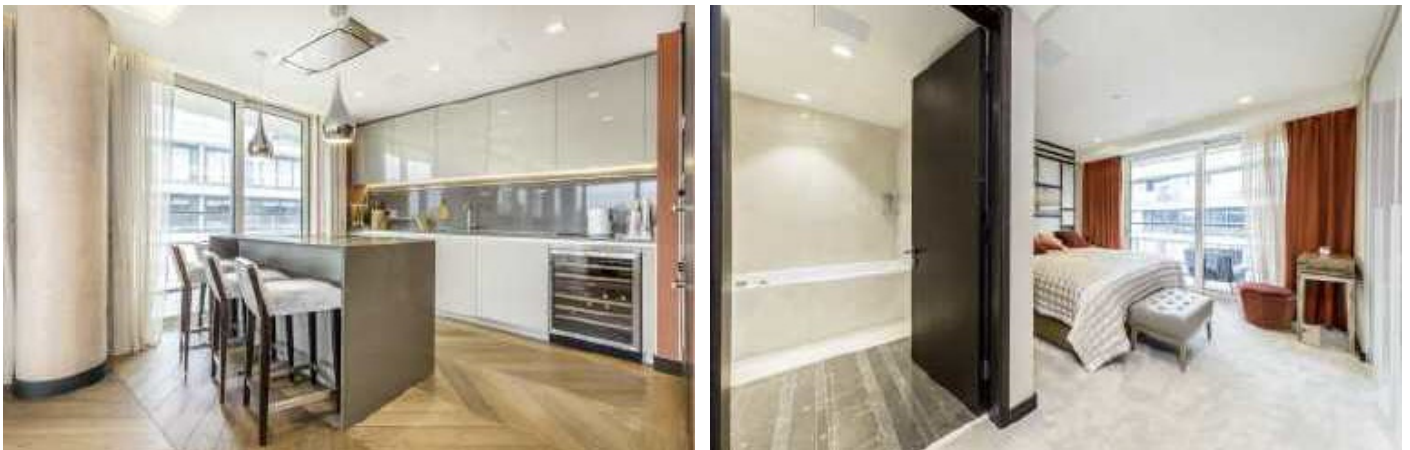
£3,450,000

Located in the luxurious riverside One Tower Bridge development, this two double bedroom flat is in stunning condition and has a large kitchen-living space, modern bathrooms & large terrace overlooking Tower Bridge and The City.

Located only 0.2 miles from London Bridge station, Balmoral House offers excellent transport links to anywhere across the capital.

Features

- One Tower Bridge
- Two Double Bedrooms
- 24 Hour Concierge
- Incredible Views
- Gym and Spa Facilities
- Fantastic Condition



Earls Way, SE1

Situated on the ninth floor of Balmoral House, the flat is beautifully designed with a fully fitted kitchen with top of the range built in appliances, fully tiled bathroom and incredible views over London.

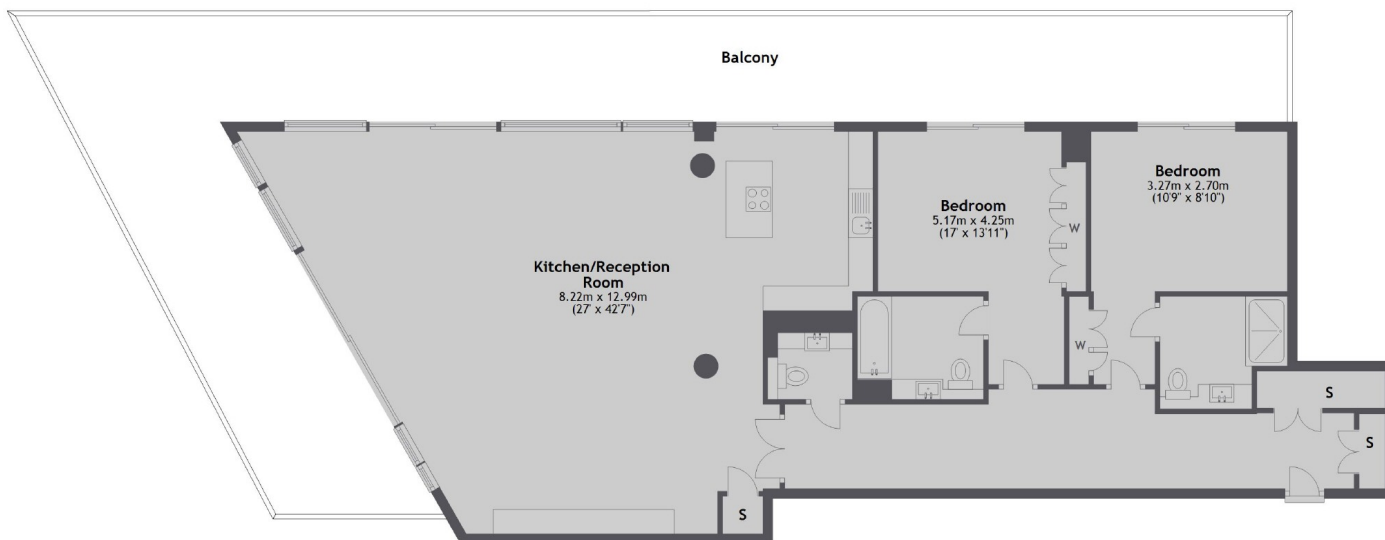
The riverside development offers 24 hour concierge, state of the art gym, swimming pool and spa facilities and beautiful communal areas.

Surrounded by excellent restaurants cafés and delis, the development is directly facing Tower Bridge, The River and The City skyline.



Earls Way, London, SE1

Ninth Floor



Total area: approx. 152.1 sq. metres (1637.3 sq. feet)