



## Goldsboro Road, SW8

### £575,000

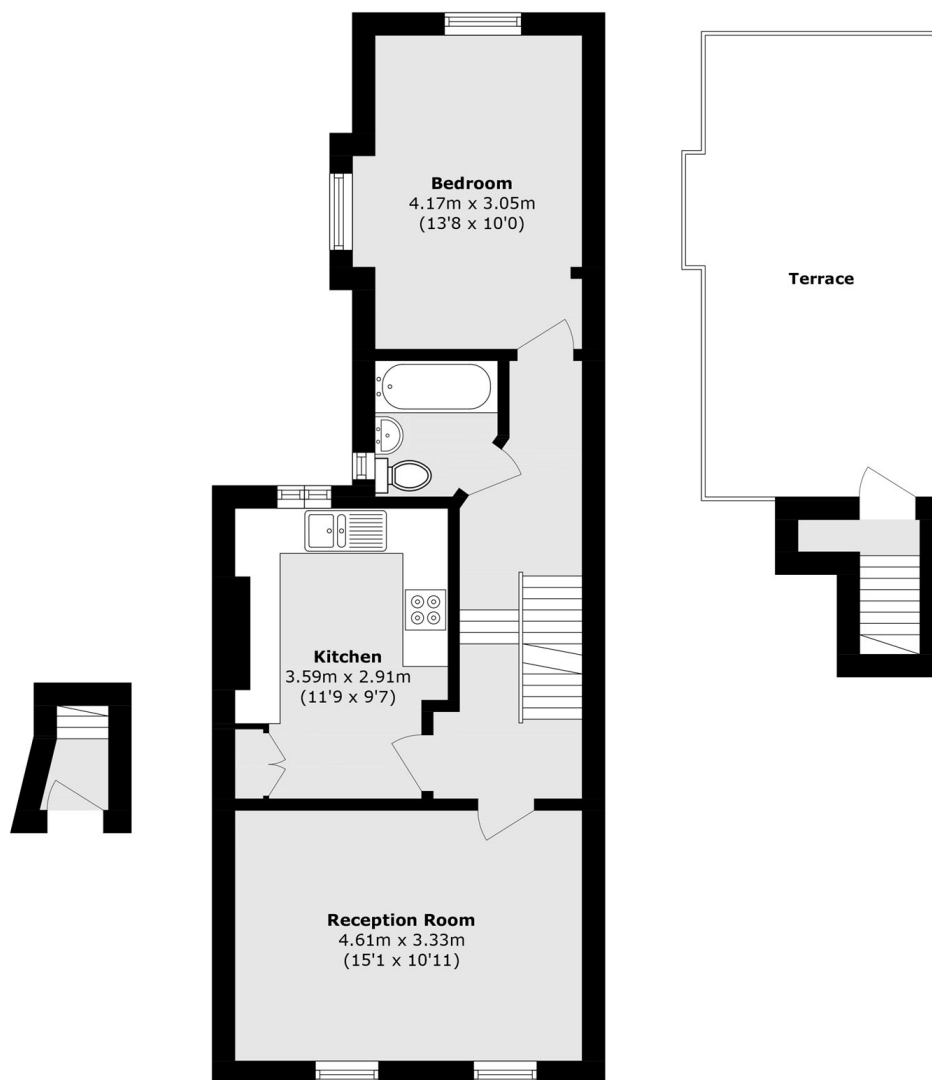
A fantastic one bedroom first floor flat in excellent condition throughout and benefitting from a wonderful West facing roof terrace. The property has a lovely reception which provides space for both living and dining areas. The separate new fitted kitchen is perfect for those who love to cook and includes a breakfast bar. The fabulous roof terrace is a sun trap and perfect for outside dining. The property is being sold with no onward chain and benefits from a loft which has excellent potential to extend subject to planning permission

Goldsboro Road is lovely quiet street, a friendly community just moments from Nine Elms Tube Station (Northern Line) and many bus links and easy access to Vauxhall. There is also an array of local shops, coffee shops and a Sainsbury's superstore.

### Features

- One Bedroom
- Healthy Lease
- West Facing Roof Terrace
- High Ceilings
- Quiet Location
- No Onward Chain

# Goldsboro Road, LONDON, SW8



**Ground Floor**

**First Floor**

**Second Floor**

Total area (approx.): 54.4 sq. m (585.5 sq. ft)  
Terrace area (approx.): 17.8 sq. m (191.5 sq. ft)

## Dexters

Kennington  
181 Kennington Lane  
London  
SE11 4EZ  
Sales  
020 7650 5102

Energy Rating: C. We aim to make our particulars both accurate and reliable. However they are not guaranteed; nor do they form part of an offer or contract. If you require clarification on any points then please contact us, especially if you're traveling some distance to view. Please note that appliances and heating systems have not been tested and therefore no warranties can be given as to their good working order.

 **RICS** | Regulated  
Estate Agent  
and Letting Agent

[dexters.co.uk](https://www.dexters.co.uk)