



## Montford Place, SE11

### £895,000

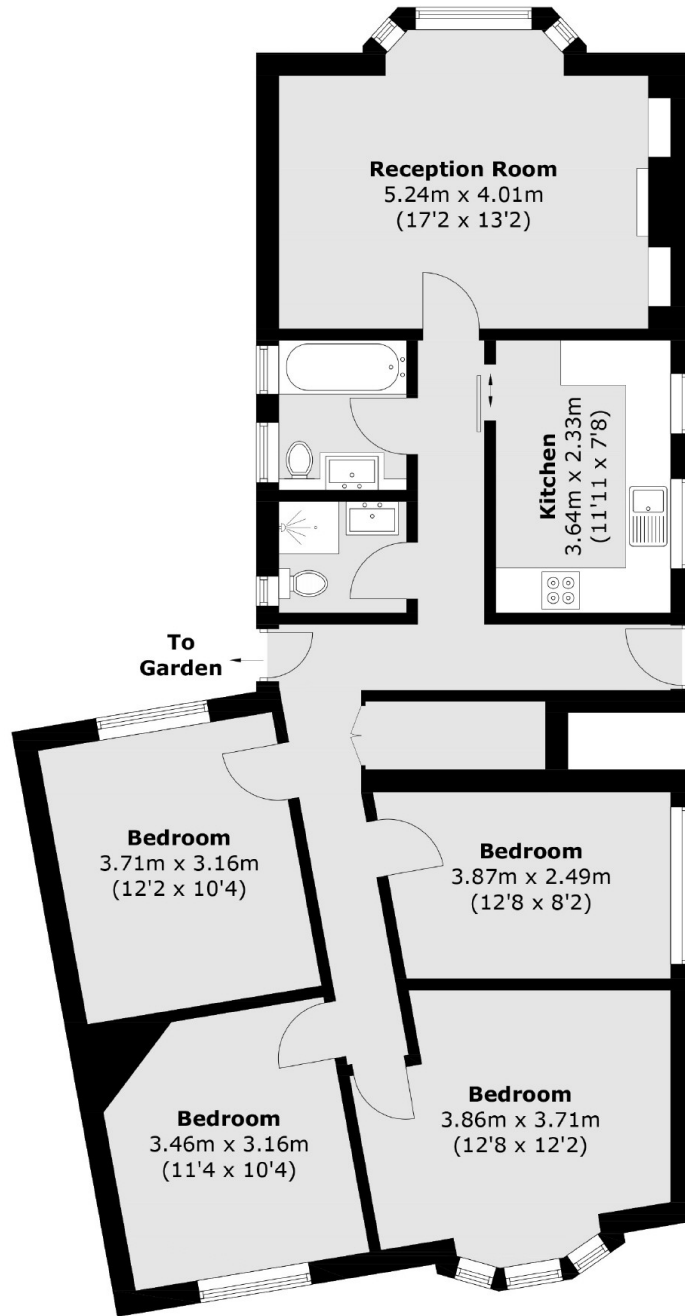
A fabulous four bedroom, two bedroom maisonette in great condition throughout. This versatile 1,074sq.ft home, has beautiful high ceilings and gorgeous parquet flooring. Benefitting from a separate eat-in kitchen, a private entrance, a share of the freehold and access onto a private rear garden. Sold with no onward chain.

Centrally located in peaceful Montford place, a quiet cul de sac just moments from pubs, eateries and local shops on Kennington Road. High in community spirit, this perfect Kennington location has great access to transport links that are unbeatable with Kennington, Oval and Vauxhall stations close by. Neighbouring what will be the iconic Gasholder number 1 at the Oval Village development and within easy reach of the City and West End.

### Features

- Four Bedrooms
- Share of Freehold
- Two Bathrooms
- Private Garden
- No Onward Chain

# Montford Place, London, SE11



## Ground Floor

Total area (approx.): 99.8 sq. m (1,074.2 sq. ft)