



## Cranworth Gardens, SW9

£549,950

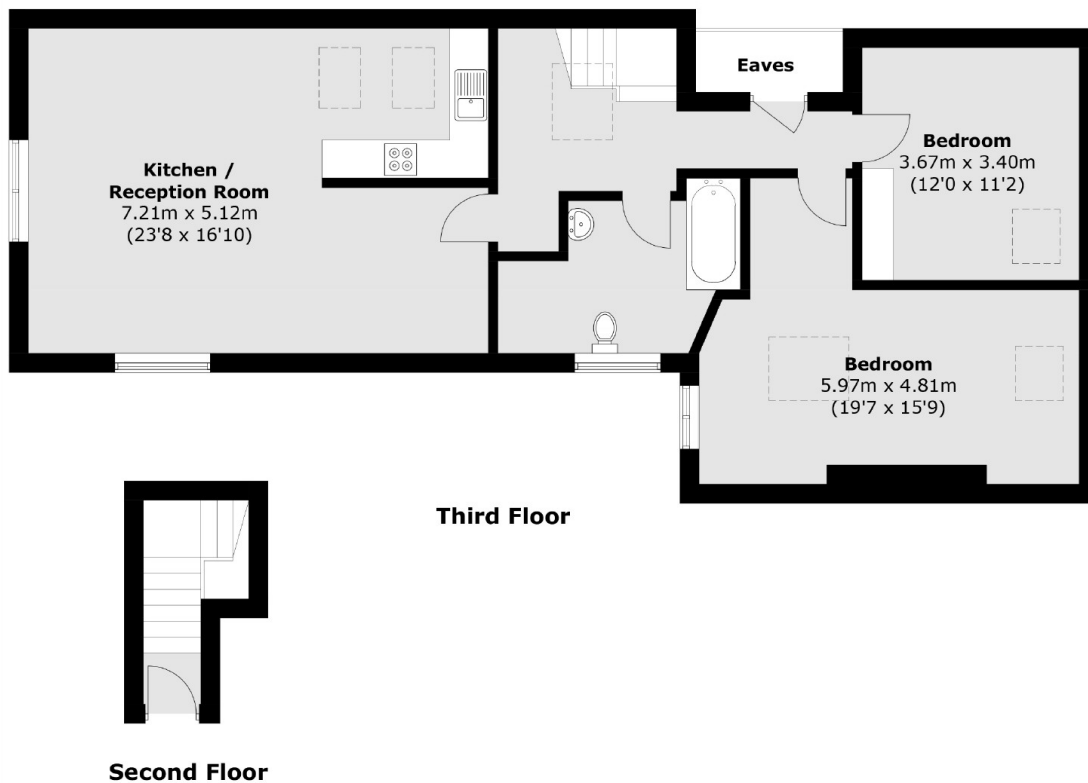
Packed full of character is this two bedroom top floor apartment at over 1,000sq.ft. The property benefits from a brilliant amount of reception space that easily accommodates both living and dining areas that combine seamlessly with the kitchen. Furthermore there is eaves storage, vaulted ceilings and it is being sold with no onward chain.

A beautiful corner aspect, located on a quiet tree lined street, nestled between both Clapham Road and Brixton Road. This brilliantly connected property is within a short walk of Oval and Stockwell tube stations, plenty of bus links and the green spaces of Kennington park.

### Features

- Two Double Bedrooms
- Top Floor
- Good Condition
- Well Proportioned Rooms
- Quiet Location
- Storage

# Cranworth Gardens, London, SW9



Total area (approx.): 95.7 sq. m (1,030.1 sq. ft)  
(Excluding Eaves)