



Lansdowne Gardens, SW8

£1,750,000

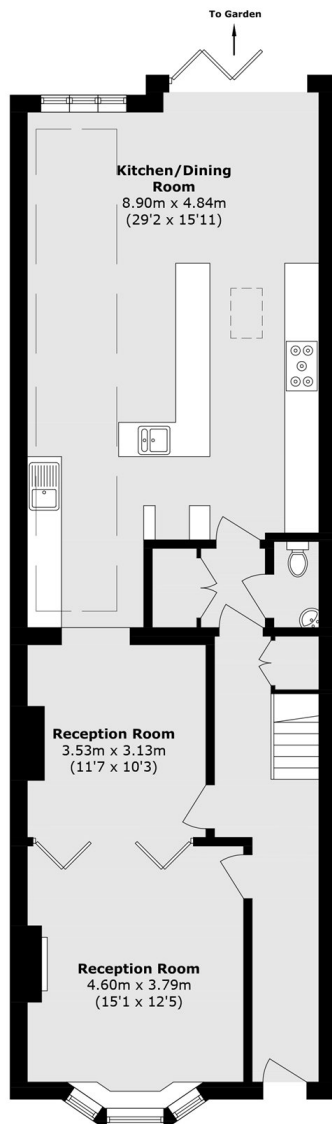
A wonderful four bedroom family home extending to 2,047 sq ft, offering generous, modern living space while retaining its original period character. Extensively rebuilt and comprehensively upgraded by the current owners, the house benefits from full extensions, renewed services and high-spec comfort and energy improvements throughout.

Set on a particularly picturesque and peaceful street within the Lansdowne Gardens Conservation Area, long regarded as one of the area's most desirable residential addresses. The property is ideally located within easy reach of Vauxhall, Stockwell and Nine Elms stations.

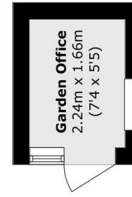
Features

- Four Double Bedrooms
- Conservation Triple Glazing
- Fabulous Entertaining Space
- EPC Rating C
- Insulated Garden Studio
- Upgraded Services

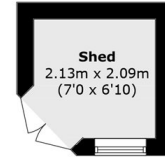
Lansdowne Gardens, London, SW8



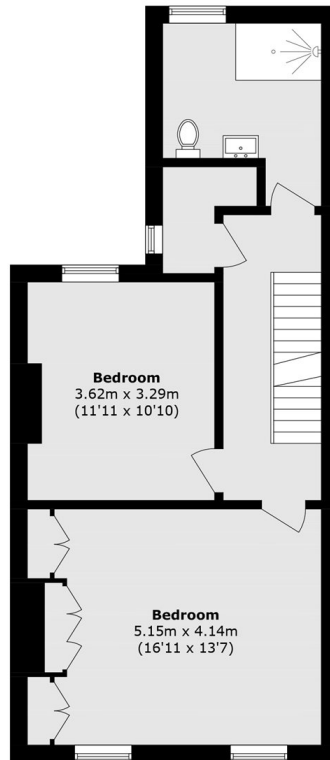
Ground Floor



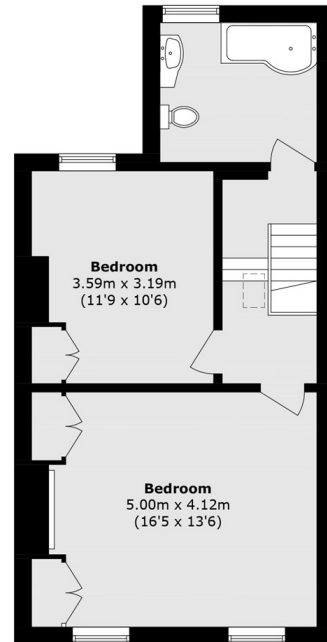
Ground Floor



Ground Floor



First Floor



Second Floor

Total area (approx.): 190.2 sq. m (2047.3 sq. ft)
Shed & Garden Office area (approx.): 7.7 sq. m (82.8 sq. ft)