



## Cornell Square, SW8

### £415,000

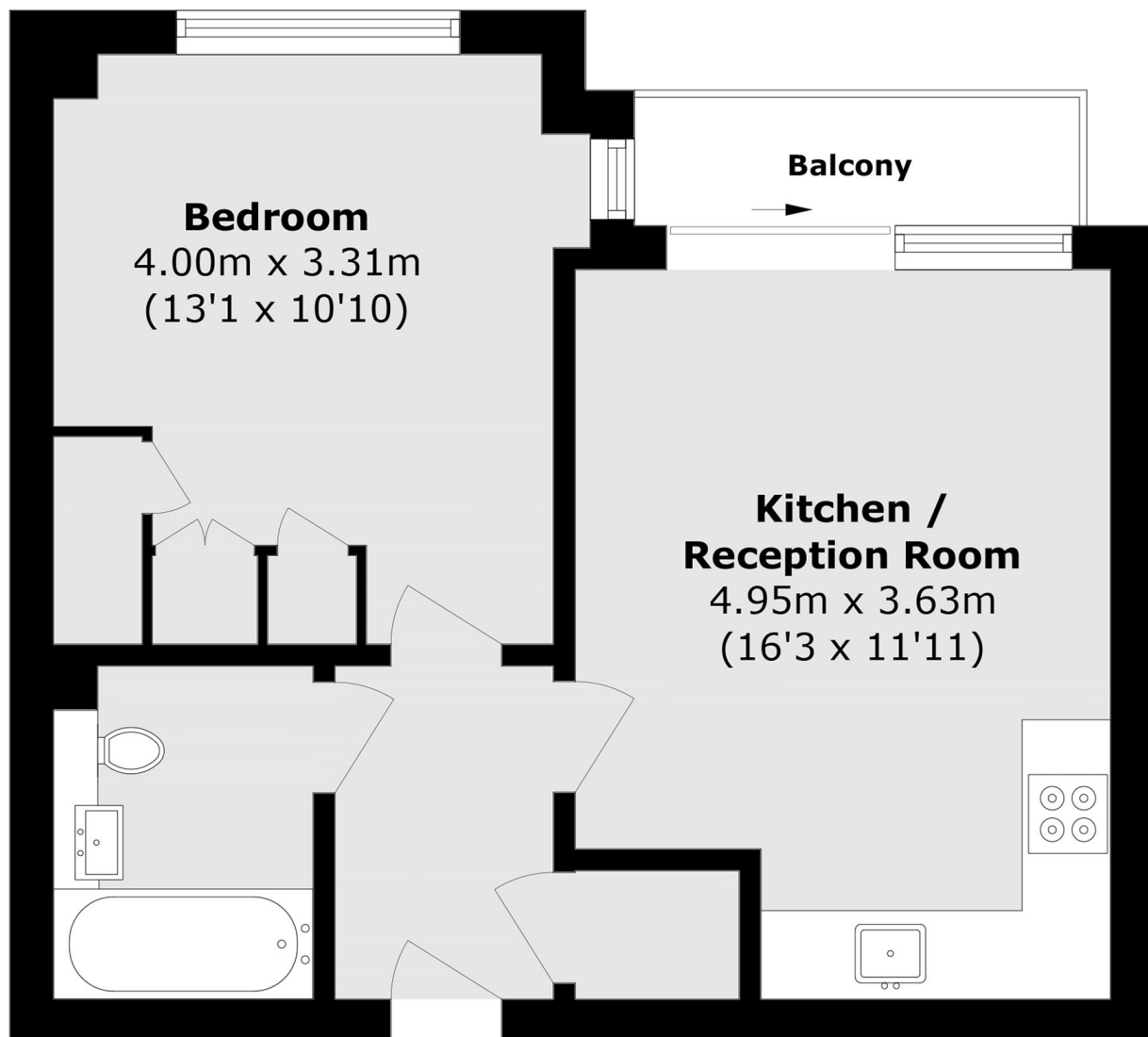
A bright and well-presented one-bedroom flat in great condition, benefitting from a secure allocated parking space. Stylish throughout this modern apartment has high ceilings, a spacious open-plan living and dining area with fitted kitchen and access onto a private balcony.

Ideally located within easy reach of a wide range of local amenities, including shops, restaurants, and a gym. Nine Elms Underground Station (Northern Line) and Vauxhall Station (Victoria Line and mainline services) are both within walking distance, offering excellent transport links. Numerous bus routes also serve the area.

### Features

- One Double Bedroom
- Great Condition
- Healthy Lease
- Secure Parking Space
- Excellent Transport Links
- 24-Hour Concierge Service

# Cornell Square, London, SW8



Total area (approx.): 40.6 sq. m (437.0 sq. ft)

Balcony area (approx.): 2.8 sq. m (30.1 sq. ft)