



Grosvenor Terrace, SE5

£549,950

A very spacious two double bedroom Georgian home at 939sq.ft with fantastic potential for the next buyer to make it their own. There is a large reception room, a separate kitchen and access to a communal garden.

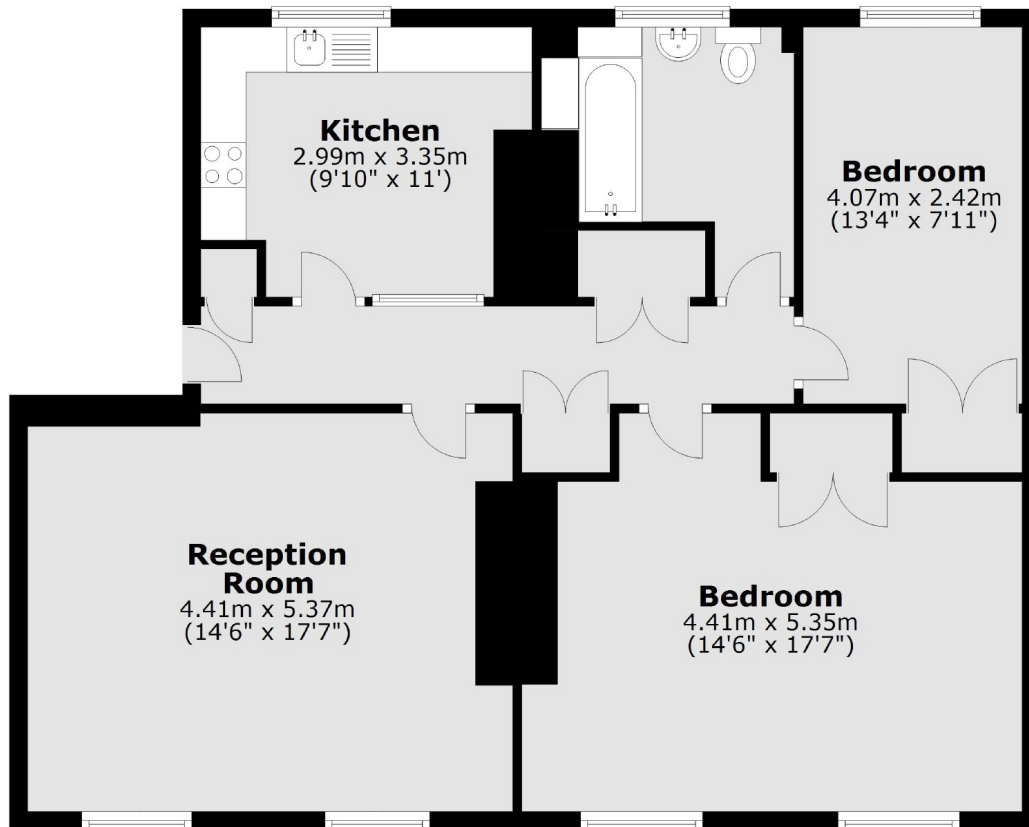
Grosvenor Terrace is located in between two fantastic parks in Burgess Park and Kennington Park. Walking distance from Kennington and Oval tube stations (Northern Line). Close by is a vast array of trendy local amenities which provide a real hub of activity for the local community.

Features

- Two Double Bedrooms
- High Ceilings
- Spacious Throughout
- Communal Garden
- Excellent Location
- Character Home

Grosvenor Terrace, London, SE5

First Floor



Total area: approx. 87.3 sq. metres (939.7 sq. feet)