



Langley Lane, SW8

£3,800 Per calendar month

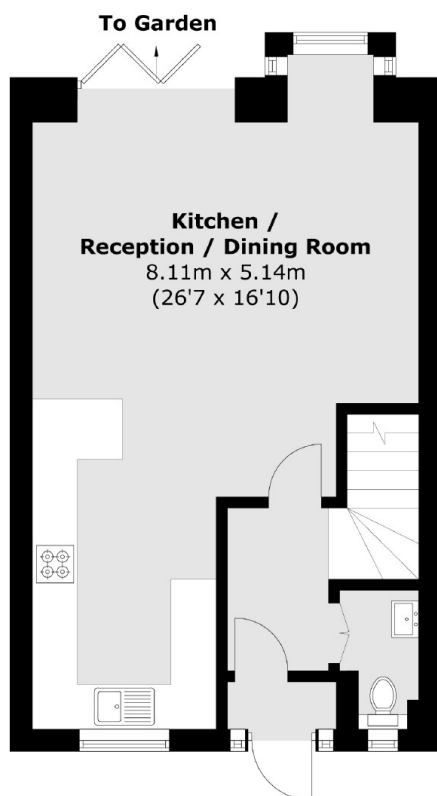
A spacious and very well presented three bedroom house located on a quiet residential road in central Vauxhall. The property offers a modern kitchen, spacious reception room with bi-fold doors leading onto a charming private garden.

Langley Lane is ideally located for the excellent transport links at Vauxhall station. Bonnington Square gardens, cafe and local shops are just a short walk away.

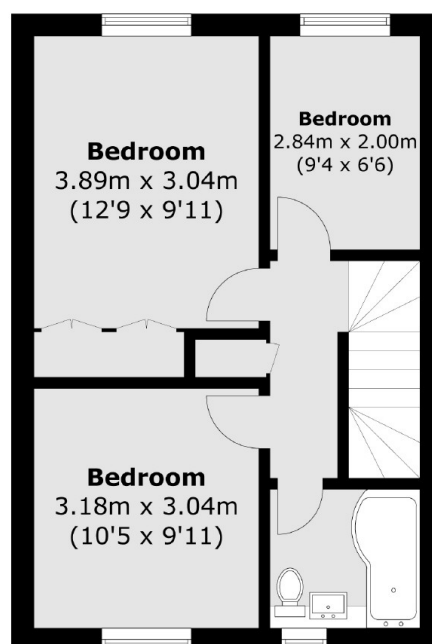
Features

- Three Bedroom Family House
- Modern Bathroom
- Excellent Condition
- Spacious Rear Garden
- Great Entertaining Space
- Private Front Drive

Langley Lane, London, SW8



Ground Floor



First Floor

Total area (approx.): 85.0 sq. m (914.9 sq. ft)