



St. Josephs Street, SW8

£2,400 Per calendar month

A spacious one double bedroom apartment located on the third floor of a popular new development close to Battersea Park. The property offers an open plan living area, integrated kitchen and a private winter balcony.

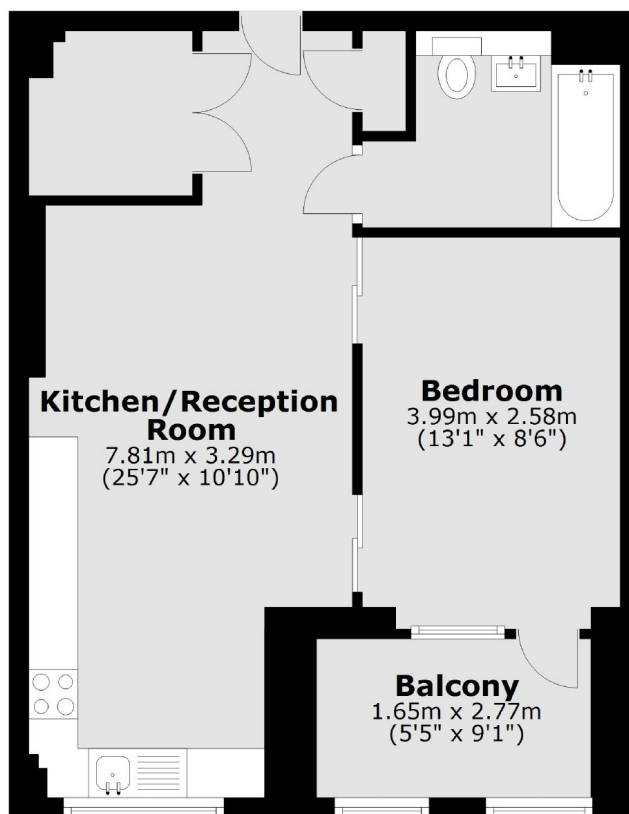
Brogan house is ideally positioned for both Battersea Park and Queenstown stations. There are many restaurants, pubs and local shops close by with Battersea Park and Power Station on your doorstep.

Features

- One Bedroom Apartment
- Modern Development
- Winter Garden
- 24/7 Concierge
- Residents Facilities
- Close To Battersea Park

**St. Josephs Street,
London, SW8**

First Floor



Total area: approx. 47.0 sq. metres (506.1 sq. feet)