



## Aldebert Terrace, SW8

### £460,000

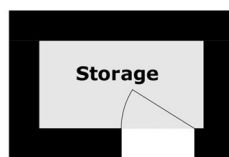
A charming one bedroom first floor flat with high ceilings and a share of the freehold. Large sash windows draw in lots of natural light into the lovely reception room which offers space for both living and dining areas. There is a separate kitchen and access to a private section of garden which is south facing. Further more there is a separate storage cupboard in the communal hallway which currently houses the washing machine and the property is being sold with no onward chain

Aldebert Terrace is within a low traffic conservation zone, perfectly positioned just moments from Albert Square and walking distance of excellent local amenities including the Canton Arms pub, local shops and cafes. There are unbeatable transport links including Nine Elms, Stockwell and Vauxhall Stations just a short walk away.

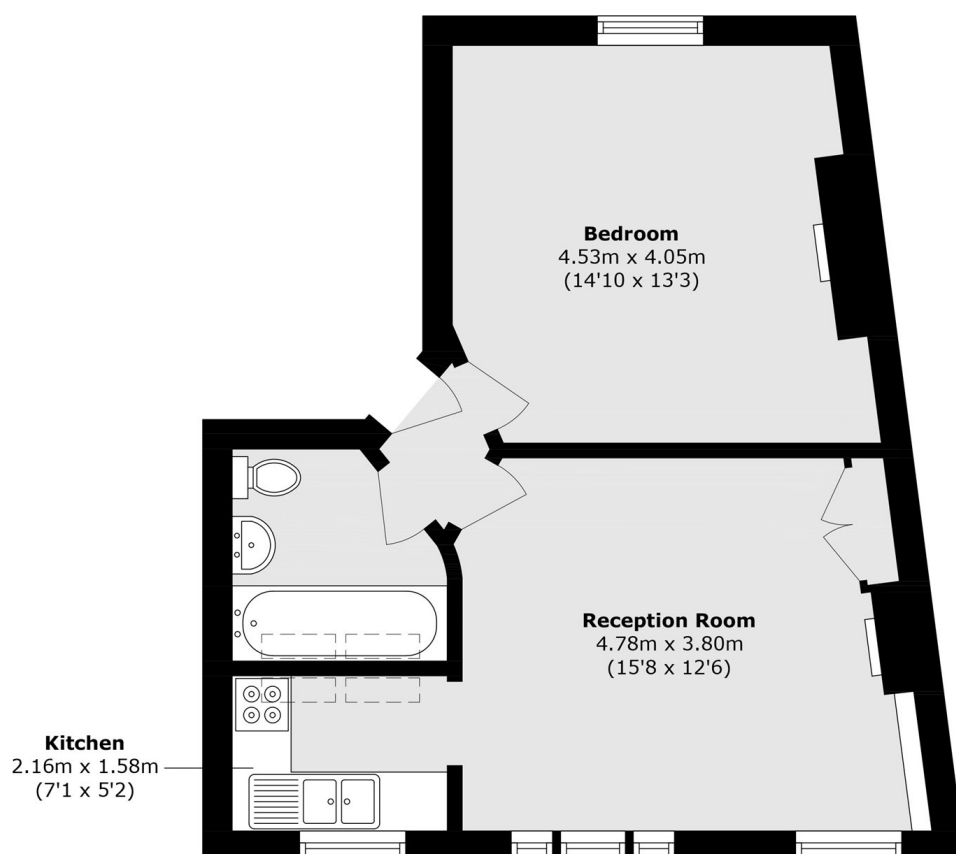
### Features

- One Bedroom
- Share of Freehold
- Private Garden
- No Onward Chain
- High Ceilings
- Excellent Location

# Aldebert Terrace, London, SW8



(Not Shown In Actual  
Location / Orientation)



Total area (approx.): 43.9 sq. m (472.5 sq. ft)  
External storage area (approx.): 1.5 sq. m (16.1 sq. ft)