



Kennington Park Road, SE11

£430,000

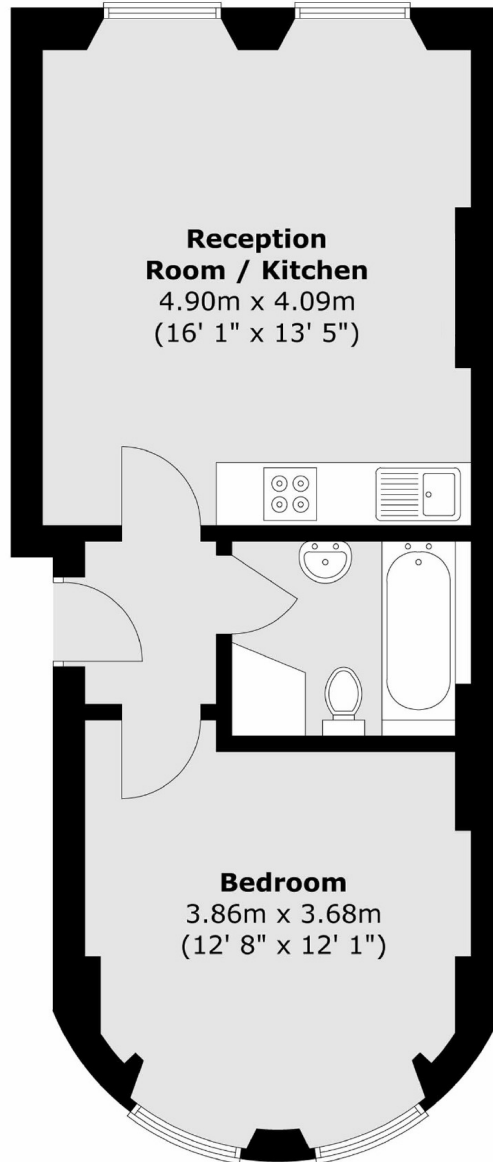
A beautiful one bedroom raised ground floor flat within a Grade II listed Georgian building. The property benefits from beautiful high ceilings, cornice and large sash windows. There is a lovely open plan reception room and kitchen to the front and the building is packed full of character including a gorgeous curved rear facade which is where the double bedroom is situated.

Kennington Park Road is a lovely tree lined street, just moments from pubs, eateries and local shops. High in community spirit, transport links are unbeatable with Kennington, Oval and Vauxhall stations close by, within a short stroll of Kennington Park and within easy reach of the City and West End.

Features

- One Bedroom
- Great Condition
- Excellent Location
- Grade II Listed
- Character Features
- High Ceilings

Kennington Park Road, London, SE11



Total area (approx.) : 41.1 sq. m (442 sq. ft)