

## Angel Lane, SE17

### £450,000

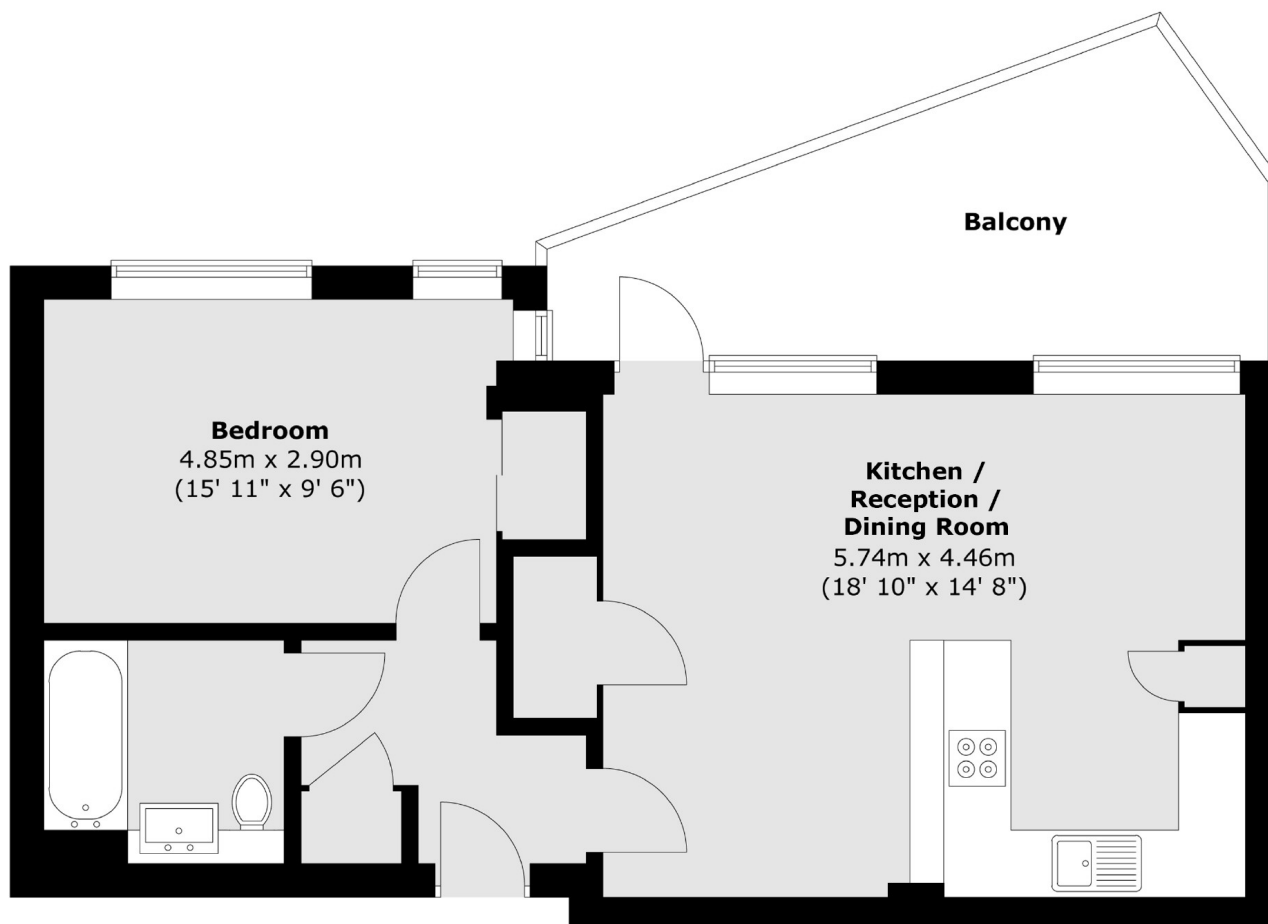
A beautifully presented one double-bedroom modern apartment that truly stands out from the crowd. The open-plan kitchen/living area is thoughtfully designed, offering a clear sense of separation with dedicated spaces for dining and relaxation. With a south-west-facing aspect and floor-to-ceiling windows, the apartment feels bright and spacious, yet decorated to feel warm and inviting, unlike so many others on the market. A large private balcony enjoys sunlight throughout the day, providing the perfect spot to unwind.

Angel Lane is quietly tucked away from the bustle of Elephant and Castle. There is a selection of modern spaces local business beneath the railway arches, and the vast range of restaurants and bars of Elephant Park. Frequent Northern Line, Bakerloo and Thames Link services are just a short walk away.

### Features

- One Double Bedroom
- Secure Development
- Large Private Balcony
- Exceptional Links
- Excellent Condition
- Modern Build

# Angel Lane, London, SE17



Total area (approx.) : 50.8 sq. m (547 sq. ft)  
Total balcony area (approx.) : 12.3 sq. m (132 sq. ft)