



## Robsart Street, SW9

### £425,000

Offers in excess of £460,000. A fantastic two bedroom, two bathroom modern apartment, accessed via its own private entrance. This stylish home has a spacious open-plan reception room with ample space for both relaxing and dining, seamlessly connected to contemporary kitchen. Finished to a good standard throughout the property offers comfortable and practical living as well as direct access onto a front patio.

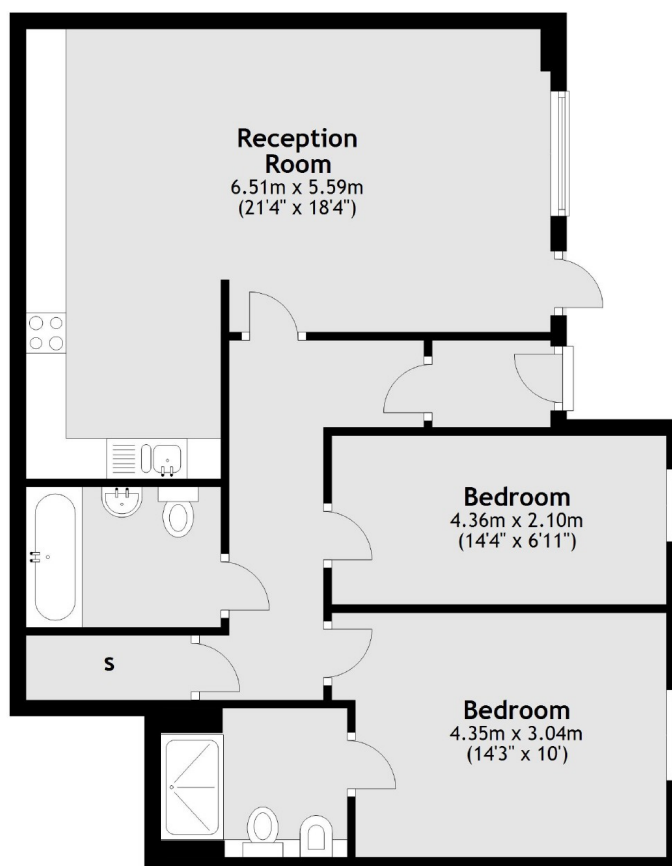
Located within walking distance to Stockwell & Brixton Underground stations both having links to the Northern and Victoria line, and set on the south side of Slade Gardens Park.

### Features

- Modern Apartment
- Two Bedrooms
- Open Plan Living
- Excellent Location
- Private Patio
- Two Bathrooms

# Robsart Street, London, SW9

## Ground Floor



Total area: approx. 71.2 sq. metres (766.6 sq. feet)