



Lorrimore Road, SE17

£675,000

A bright and spacious split level character home in excellent condition throughout. At 852sq.ft this well proportioned home has three bedrooms, a charming reception room a separate kitchen and great storage throughout. Sold with no onward chain

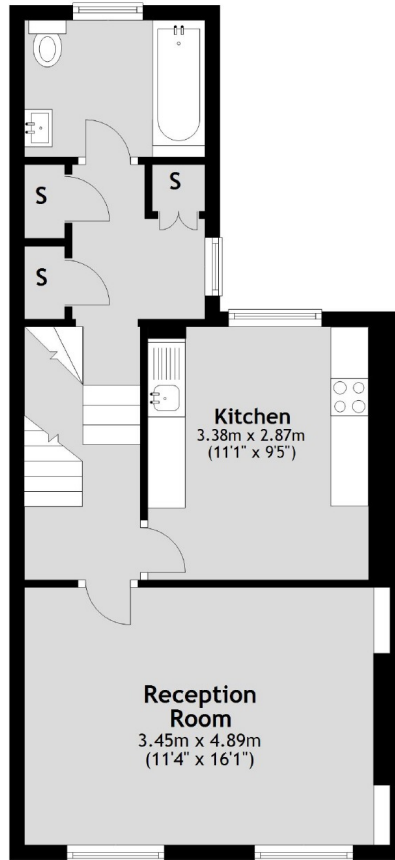
Lorrimore Road offers exceptional transport links, it is closely located to Kennington station giving access to the Northern line. Kennington Park is a five minute walk away, as are a range of local shops and restaurants.

Features

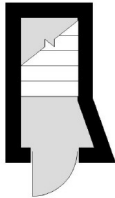
- Three Bedrooms
- Excellent Location
- Split Level
- Separate Kitchen
- Well Finished
- No Onward Chain

Lorrimore Road, London, SE17

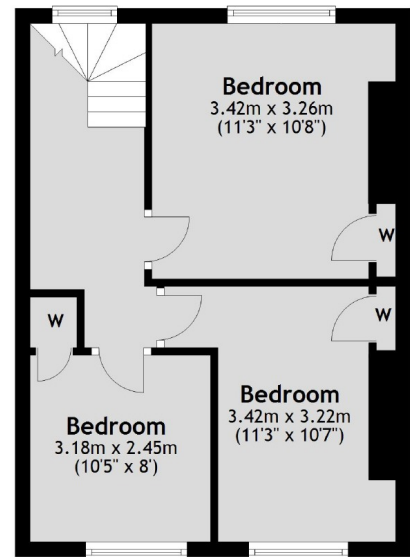
First Floor



Ground Floor



Second Floor



Total area: approx. 79.2 sq. metres (852.5 sq. feet)

Dexters

Kennington
181 Kennington Lane
London
SE11 4EZ
Sales
020 7650 5102

Energy Rating: D. We aim to make our particulars both accurate and reliable. However they are not guaranteed; nor do they form part of an offer or contract. If you require clarification on any points then please contact us, especially if you're traveling some distance to view. Please note that appliances and heating systems have not been tested and therefore no warranties can be given as to their good working order.

 **RICS** | Regulated
Estate Agent
and Letting Agent

dexters.co.uk