



South Island Place, SW9

£625,000

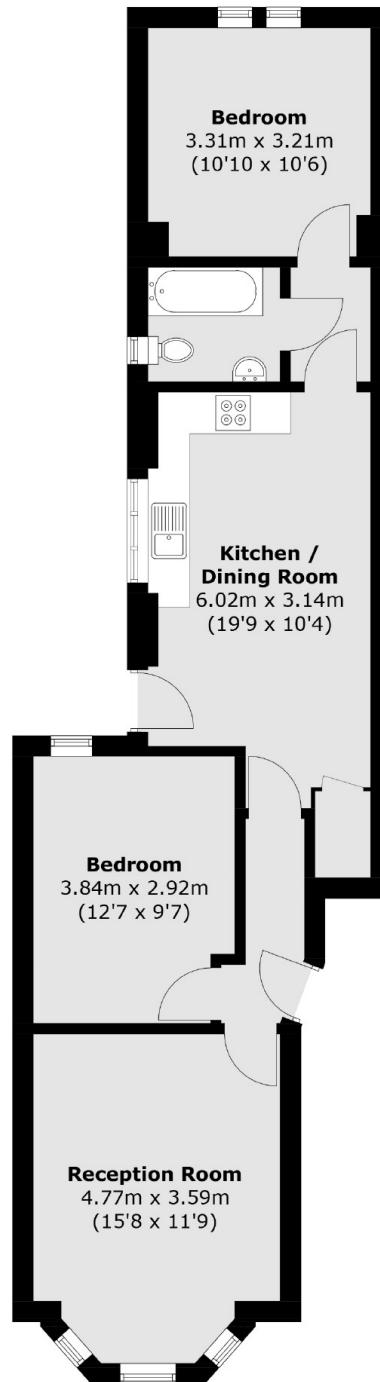
A fantastic two double bedroom ground floor flat with direct access onto a private garden. This wonderful home has a bay fronted reception room and a spacious eat in kitchen diner which is perfect for those who love to cook and entertain. Sold with no onward chain.

South Island Place is quietly nestled between both Clapham Road and Brixton Road. This brilliantly connected property is within a short walk of Oval station, plenty of bus links and the green spaces of Kennington park.

Features

- Two Double Bedrooms
- Private Garden
- Excellent Potential
- No Onward Chain
- Quiet Location
- Kitchen/Diner

South Island Place, London, SW9



Total area (approx.): 66.4 sq. m (714.7 sq. ft)

Dexters

Kennington
181 Kennington Lane
London
SE11 4EZ
Sales
020 7650 5102

Energy Rating: D. We aim to make our particulars both accurate and reliable. However they are not guaranteed; nor do they form part of an offer or contract. If you require clarification on any points then please contact us, especially if you're traveling some distance to view. Please note that appliances and heating systems have not been tested and therefore no warranties can be given as to their good working order.

 **RICS** | Regulated
Estate Agent
and Letting Agent

[dexters.co.uk](https://www.dexters.co.uk)