

## St. Josephs Street, SW8

£2,800 Per calendar month

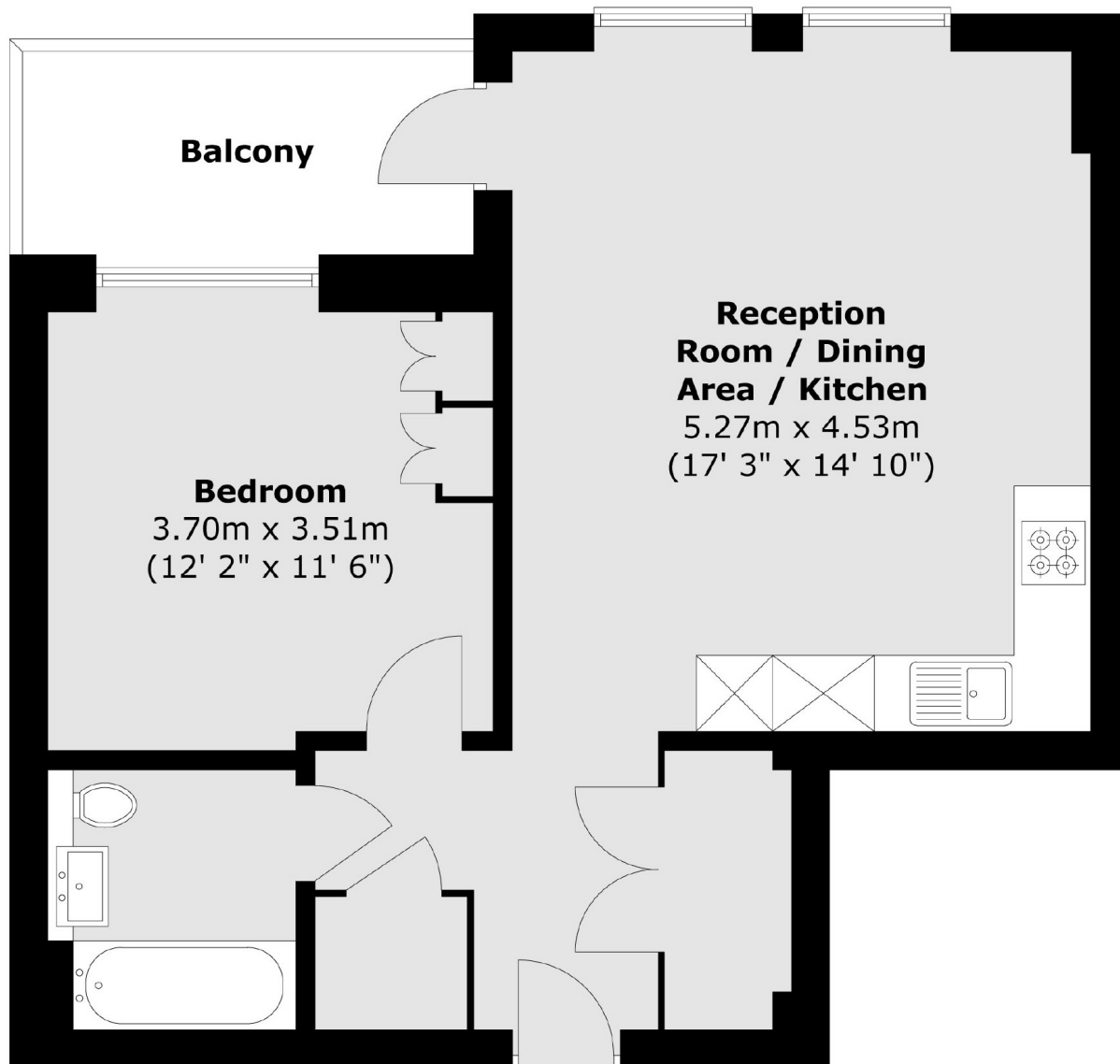
A spacious one double bedroom apartment located in a popular new development close to Battersea Park. The property offers an open plan living area, integrated kitchen and a private winter balcony, perfect for a single professional or couple.

Brogan house is ideally positioned for both Battersea Park and Queenstown stations. There are many restaurants, pubs and local shops close by with Battersea Park and Power Station on your doorstep.

### Features

- One Bedroom Apartment
- Modern Development
- Close To Battersea Park
- Winter Garden
- 24 Hour Concierge
- Residents Facilities

# St. Josephs Street, London, SW8



Total area (approx.) : 51.3 sq. m (552 sq. ft)  
Total balcony area (approx.) : 5.7 sq. m (61 sq. ft)