



St. George Wharf, SW8

£3,300 Per calendar month

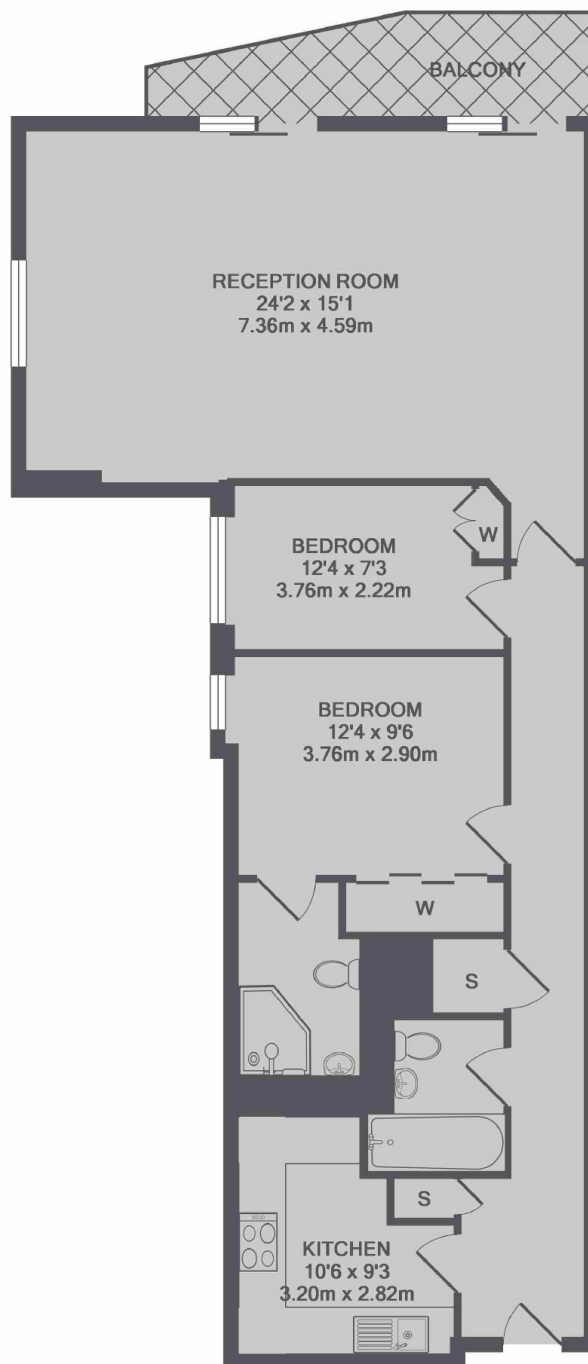
A very spacious two double bedroom apartment set within this sort after riverside development. The property is stylishly furnished throughout and includes a spacious reception room with excellent entertaining space.

St George Wharf residents benefit from its 24 hour concierge and security with many on site amenities that include a gym, restaurants, bars and a dentist.

Features

- Two Double Bedrooms
- Separate Kitchen
- Two Bathrooms
- 24 Hour Concierge
- Private Balcony
- Wooden Floors

St. George Wharf, London, SW8



TOTAL APPROX. FLOOR AREA 934 SQ.FT. (86.8 SQ.M.)

Dexters

Kennington
181 Kennington Lane
London
SE11 4EZ
Lettings
020 7650 5103

Energy Rating: C. We aim to make our particulars both accurate and reliable. However they are not guaranteed; nor do they form part of an offer or contract. If you require clarification on any points then please contact us, especially if you're traveling some distance to view. Please note that appliances and heating systems have not been tested and therefore no warranties can be given as to their good working order.

 **RICS** | Regulated
Estate Agent
and Letting Agent

[dexters.co.uk](https://www.dexters.co.uk)