



St. George Wharf, SW8

£2,900 Per calendar month

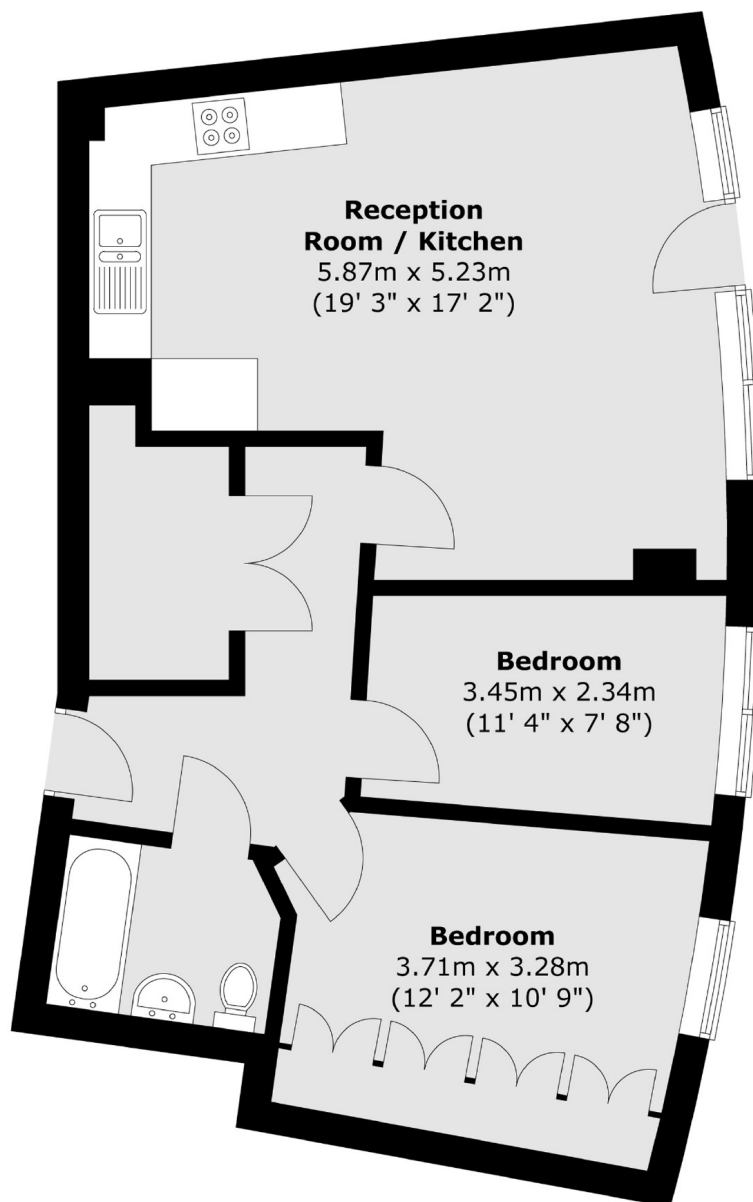
A well-presented two-bedroom apartment in the popular St George Wharf development, offering modern interiors and stunning views of the City skyline. Features include an open-plan living space, sleek kitchen, a family bathroom and floor-to-ceiling windows. Suitable to rent for nine months.

Ideally located just moments from Vauxhall Tube and Train stations, with 24-hour concierge and a variety of cafés and restaurants nearby.

Features

- Two Bedrooms
- One Bathroom
- City Skyline Views
- Good Location
- Close To Station
- Great Condition

St. George Wharf, London, SW8



Total area (approx.) : 61.8 sq. m (665 sq. ft)

Dexters

Kennington
181 Kennington Lane
London
SE11 4EZ
Lettings
020 7650 5103

Energy Rating: C. We aim to make our particulars both accurate and reliable. However they are not guaranteed; nor do they form part of an offer or contract. If you require clarification on any points then please contact us, especially if you're traveling some distance to view. Please note that appliances and heating systems have not been tested and therefore no warranties can be given as to their good working order.

 **RICS** | Regulated
Estate Agent
and Letting Agent

[dexters.co.uk](https://www.dexters.co.uk)