



Grosvenor Terrace, SE5

£4,350 Per calendar month

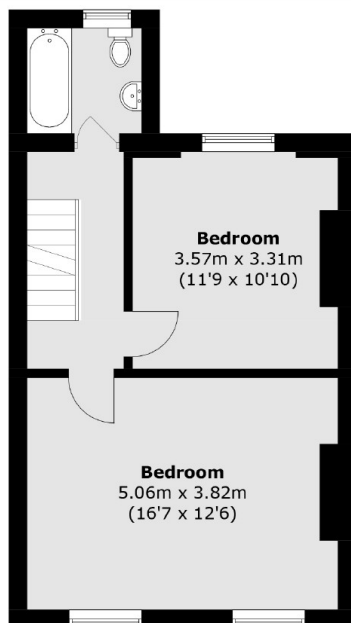
A spacious four double bedroom, two bathroom terraced house which is split over four floors. The property offers a double reception, modern kitchen with dining space and access to large rear garden.

The property is ideally positioned for Oval and Kennington tube stations (Northern Line) and within easy walking distance to Kennington Park.

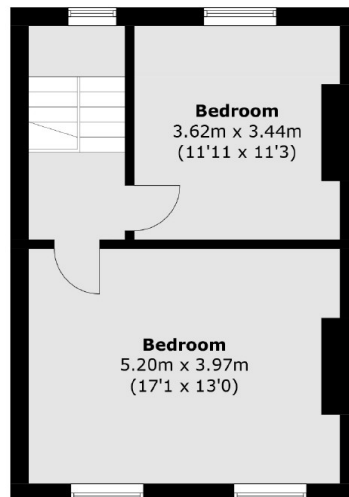
Features

- Four Bedrooms
- Terraced House
- Two Modern Bathrooms
- Very Spacious
- Private Rear Garden
- Excellent Location

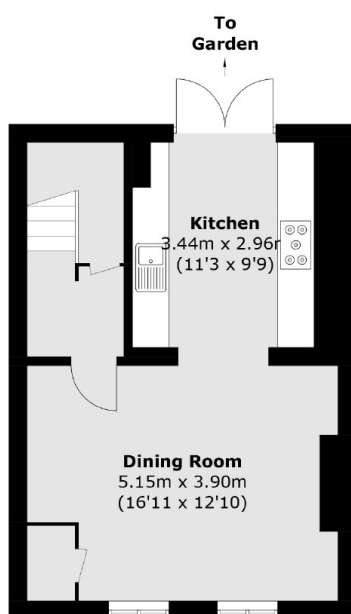
Grosvenor Terrace, London, SE5



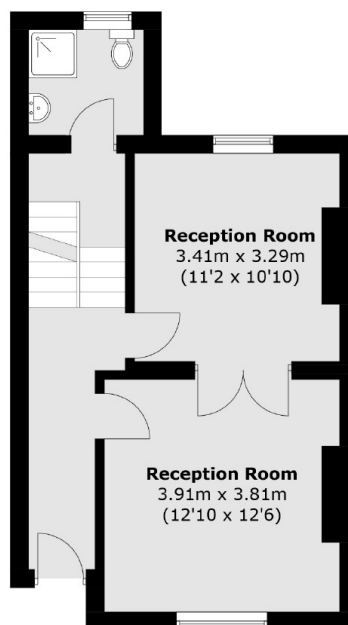
First Floor



Second Floor



Lower Ground Floor



Ground Floor

Total area (approx.): 162.2 sq. m (1,745.9 sq. ft)