



Offenham Road, SW9

£2,200 Per calendar month

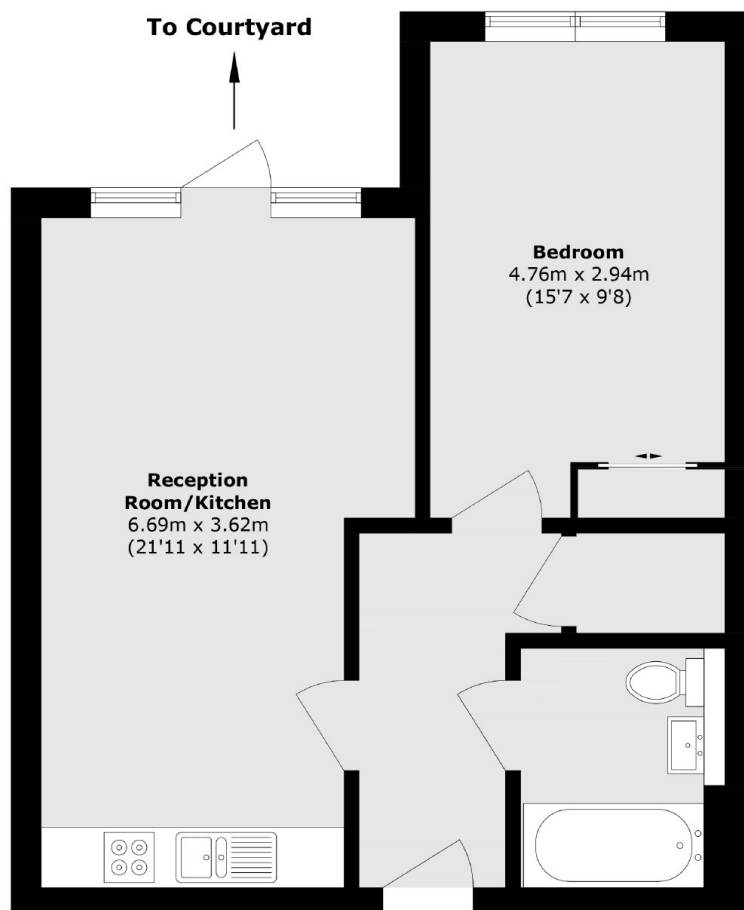
A very well presented and spacious one double bedroom ground floor apartment, located in the desirable Oval Quarter development. The property offers a modern kitchen, a spacious reception room and a private balcony.

Oval Quarter is nestled between Eythorne Park and Myatt's Field Park, a short walk to Brixton Road which offers a variety of cafés, restaurants and bars. Stockwell and Oval underground stations (Victoria/Northern Line) are close by.

Features

- One Double Bedroom
- Ground Floor Flat
- Modern Bathroom
- High Specification
- Private Balcony
- Great Location

Offenham Road, London, SW9



Total area (approx.): 50.8 sq. m (546.8 sq. ft)