



## Camberwell New Road, SE5

### £1,750,000

This remarkable five bedroom Grade II listed Georgian home is in exceptional condition throughout. Split over four floors at 2,590sq.ft this versatile home has an incredible garden perfect for family living and entertaining.

Camberwell New Road is a fantastic location just moments from the green spaces of Kennington Park and Myatt's Fields Park. Oval tube (Northern Line) is within walking distance, providing easy access into Town and the City. Buzzing Camberwell is a short walk away with it's array of restaurants and pubs.

### Features

- Grade II Listed
- Large Garden
- Four Double Bedrooms
- Excellent Reception Space
- No Onward Chain
- Separate Basement Flat





## Camberwell New Road, SE5

The property has been thoughtfully renovated throughout with the input of an architect, retaining much of its character and charm. The ground floor has a bright and airy double length reception room with gorgeous high ceilings, two feature fireplaces and large sash windows that draw in lots of natural light. This flows beautifully into a sociable kitchen/breakfast room. French doors lead out onto a lovely terrace which is perfect for taking in the first class rear garden which has been thoughtfully designed by a chelsea award winning designer, creating a wonderful space for outside dining with composite decking, astro turf and a wonderful fire pit with bespoke seating perfect for a summer evening.

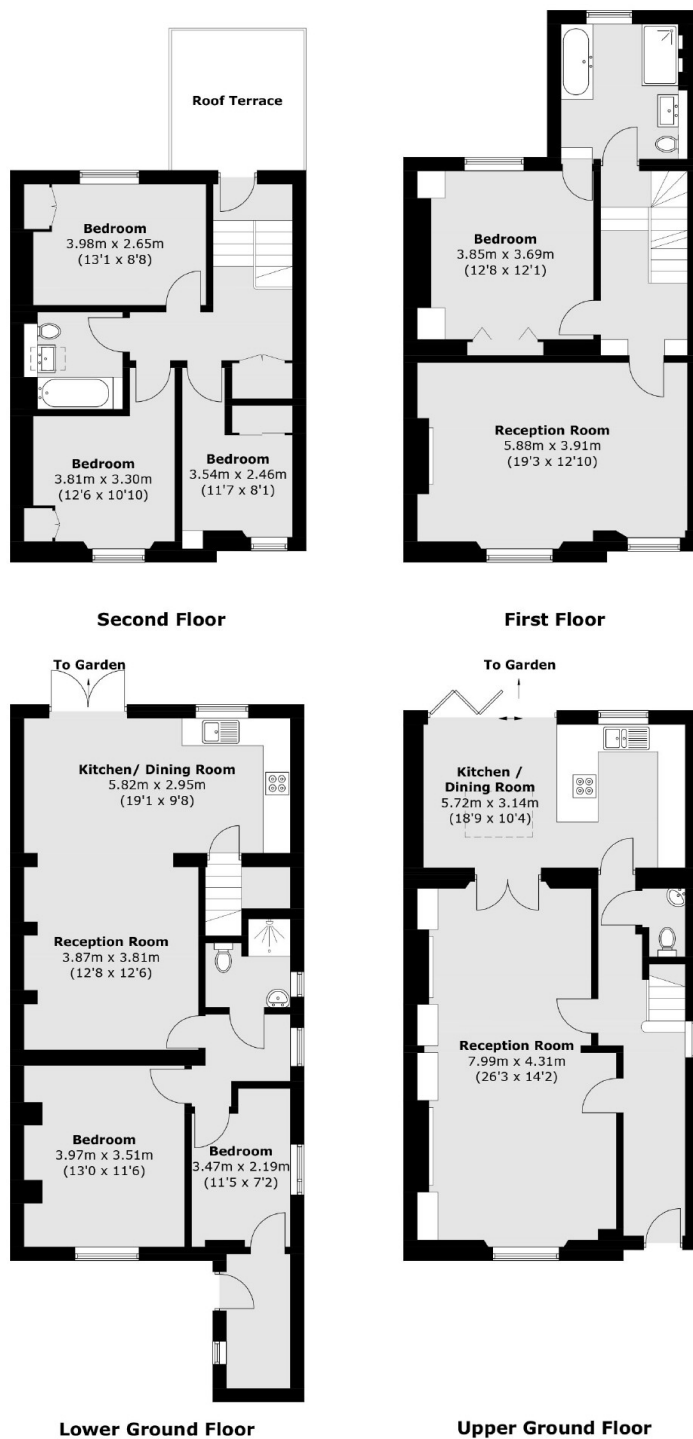
The first floor has an additional reception room to the front which could also be a bedroom and the master bedroom overlooks the rear garden and is complete with built-in wardrobes and access to a sumptuous Jack and Jill style bathroom. The second floor has access out onto a south facing roof terrace and three bedrooms which are served by a family bathroom

Furthermore the lower ground floor has a self-contained one bedroom flat which is perfect for an au pair or elderly relative that benefits from it's own private entrance.





# Camberwell New Road, London, SE5



Total area (approx.): 240.8 sq. m (2590.8 sq. ft)  
Roof Terrace area (approx.): 8.8 sq. m (94.7 sq. ft)

## Dexters

Kennington  
323 Kennington Road  
London  
SE11 4QE  
Sales  
0207 650 5102

Energy Rating: D. We aim to make our particulars both accurate and reliable. However they are not guaranteed; nor do they form part of an offer or contract. If you require clarification on any points then please contact us, especially if you're traveling some distance to view. Please note that appliances and heating systems have not been tested and therefore no warranties can be given as to their good working order.

 **RICS** | Regulated  
Estate Agent  
and Letting Agent

dexters.co.uk