



Grosvenor Terrace, SE5

£625,000

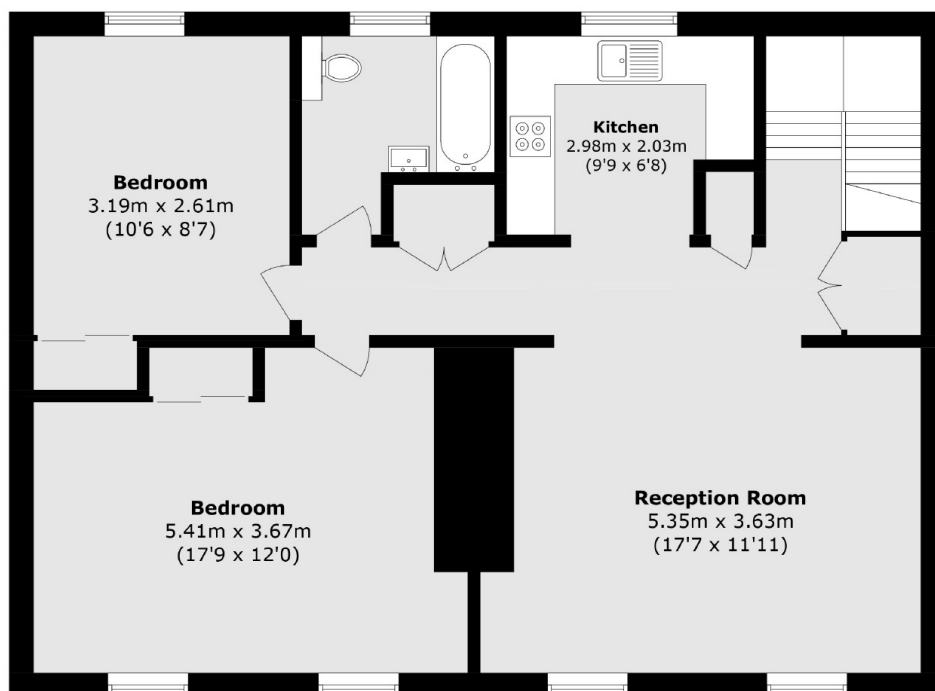
This beautifully presented two double bedroom top floor apartment has a fantastic sociable reception room providing space for both living and dining areas. Benefitting from a separate kitchen this 959sq.ft home has plenty of storage and access to the large south east facing communal garden.

Quietly located between two phenomenal green spaces, Burgess Park and Kennington Park. Conveniently positioned within walking distance of both Kennington tube line (Northern Line) and Elephant & Castle (Northern & Bakerloo lines). The property is just moments from a vast array of local amenities which provide a real hub of activity for the local community.

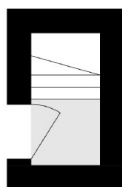
Features

- Two Bedrooms
- 959sq.ft
- Peaceful Location
- Communal Garden
- 104 Year Lease
- Top Floor

Grosvenor Terrace, London, SE5



Second Floor



First Floor

Total area (approx.): 89.1 sq. m (959 sq. ft)