



Chatham Street, SE17

£450,000

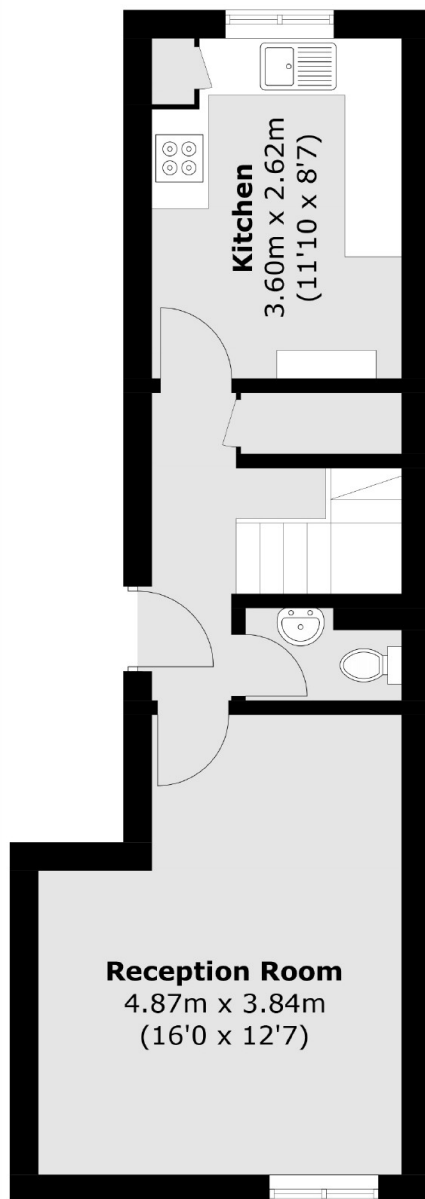
A fantastic three double bedroom home at over 900sq.ft split over the top two floors of this purpose built block. The property benefits from a spacious reception room with direct access onto a balcony and a separate kitchen. Sold with no onward chain.

Chatham Street is perfectly located within a short walk of great transport links. There are many bus routes providing good access to the City and West end. Salisbury Row Park is just moments away as is Bermondsey Street with it's wealth of bars, boutiques and restaurants.

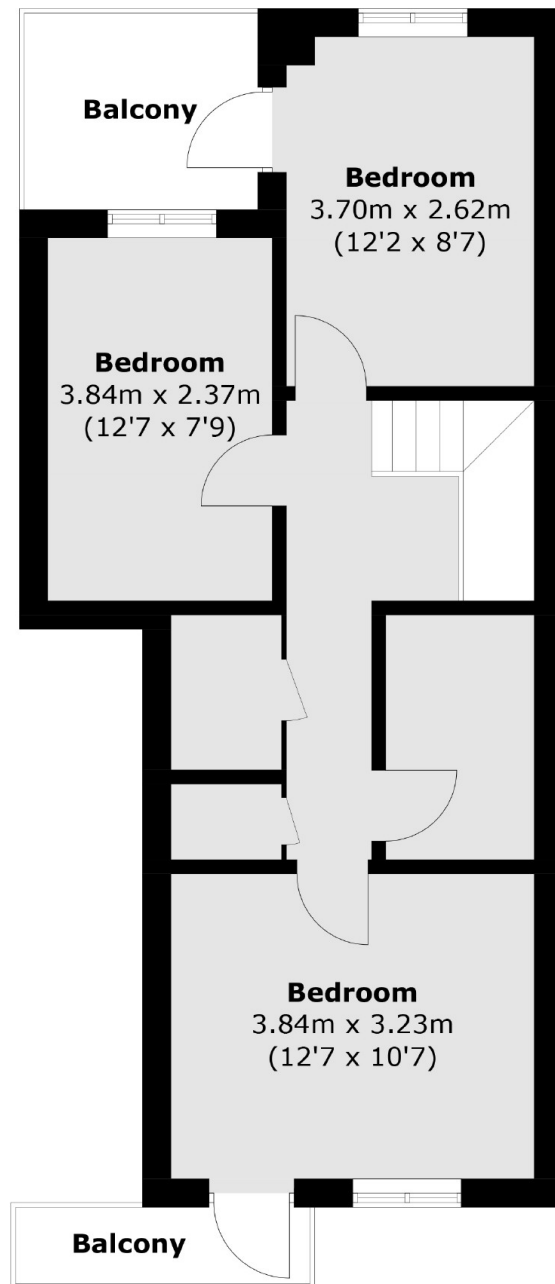
Features

- No Onward Chain
- Purpose Built
- Security Entry Phone
- Balcony
- Three Bedrooms
- Bright and Spacious

Chatham Street,
London, SE17



Ground Floor



First Floor

Total area (approx.): 84.8 sq. m (912.8 sq. ft)
Balcony: 7.6 sq. m (81.8 sq. ft)