



## South Island Place, SW9

### £489,950

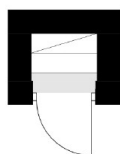
A fantastic two double bedroom, second floor Victorian conversion in good condition and benefitting from a 146 year lease. Flooded with natural light this is a perfect first time purchase, benefitting from a lovely reception room and a separate kitchen which is perfect for those who love to cook and entertain. Sold with no onward chain.

Located on a quiet street, nestled between both Clapham Road and Brixton Road. This brilliantly connected property is within a short walk of Oval and Stockwell tube stations, various bus links, and the green spaces of Kennington Park. Oval has a friendly village feel, with an eclectic range of local shops, delis, restaurants and bars, as well as a greengrocers and a thriving Saturday Farmers Market.

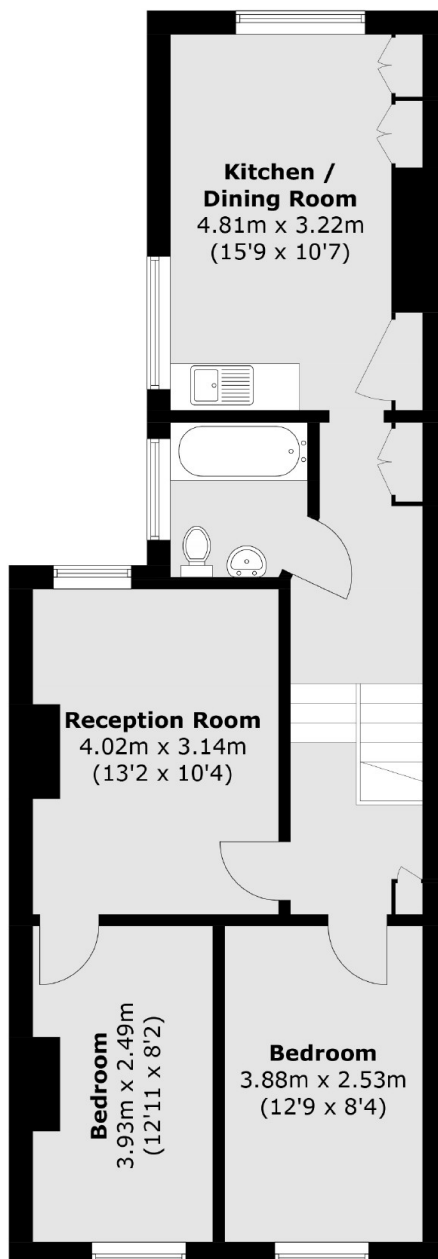
### Features

- Two Bedrooms
- No Onward Chain
- Great Location
- Top Floor
- 146 Year Lease

# South Island Place, London, SW9



**First Floor**



**Second Floor**

Total area (approx.): 65.0 sq. m (699.6 sq. ft)

## Dexters

Kennington  
323 Kennington Road  
London  
SE11 4QE  
Sales  
0207 650 5102

Energy Rating: . We aim to make our particulars both accurate and reliable. However they are not guaranteed; nor do they form part of an offer or contract. If you require clarification on any points then please contact us, especially if you're traveling some distance to view. Please note that appliances and heating systems have not been tested and therefore no warranties can be given as to their good working order.



dexters.co.uk