



Clapham Road, SW9

£650,000

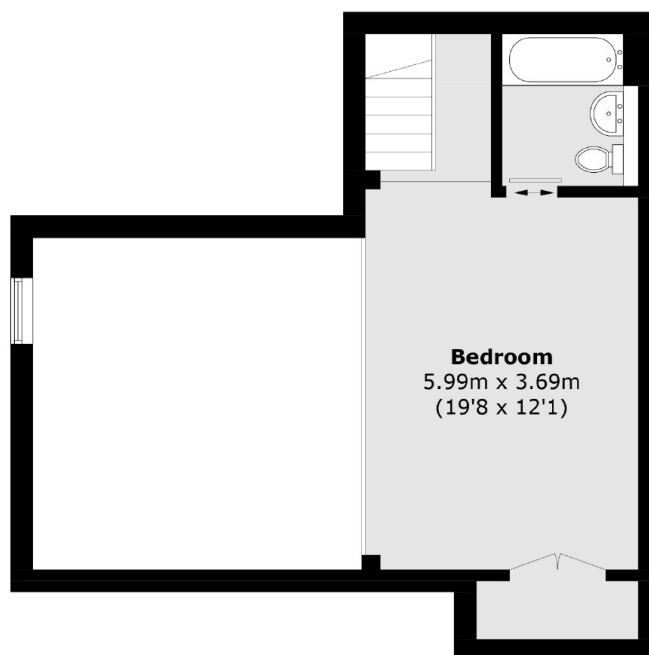
A collection of four one and two-bedroom luxury and unique apartments located within a former Printworks factory in SW9. Residents at The Printworks benefit from a 24-hour concierge, high-end kitchens including Siemens appliances, an energy-efficient district heating system and the option to purchase an additional gated underground parking spot!

Located within walking distance to Stockwell Station, residents benefit from quick and easy access to London Victoria. There are a wide variety of amenities nearby including bars, restaurants, shops and green spaces.

Features

- Historic Building - 1896
- Underground Parking Available
- Open Plan Kitchen/Lounge
- Stockwell Station
- Northern Line Connection
- 24/7 Concierge
- New Build Warranty - 10 years

Clapham Road, London, SW9



First Floor



Ground Floor

Total area (approx.): 75.9 sq. m (817 sq. ft)