



## Aldebert Terrace, SW8

£695,000

A charming two bedroom garden flat in excellent condition throughout. Benefitting from fabulous entertaining space and a bespoke kitchen there are two bathrooms, a private entrance and direct access onto a private south facing garden.

Aldebert Terrace is within a low traffic conservation zone, perfectly positioned just moments from Albert Square and walking distance of excellent local amenities including the Canton Arms pub, local shops and cafes. There are unbeatable transport links including Nine Elms, Stockwell and Vauxhall Stations just a short walk away.

### Features

- Garden Flat
- Two Bedrooms
- Share of Freehold
- Private Rear Garden
- Excellent Location
- Bespoke Kitchen





## Aldebert Terrace, SW8

This charming home positioned on the lower ground floor has a private entrance and leads through into a bright bay fronted bedroom complete with built-in wardrobes and access to a stylish ensuite shower room. The second bedroom also provides the flexibility of being an office which is also served by a well finished bathroom.

The high specification and bespoke kitchen is the real heartbeat of this gorgeous home, combining seamlessly with the reception area, creating the perfect space for those who love to cook and entertain. There is then access onto a private south facing garden which is a real sun trap and benefits from brand new decking.

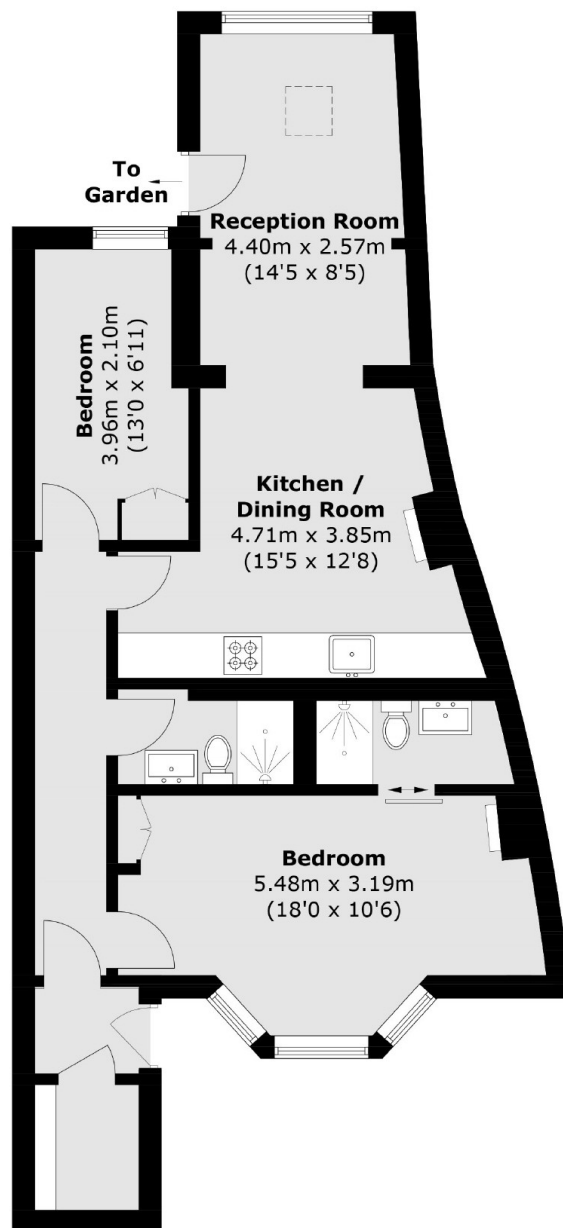
Finished to an excellent standard throughout with a combination of exposed wooden and tiled floors this turnkey home has a share of the freehold and is ready for the next buyers to make it their own.







# Aldebert Terrace, London, SW8



Total area (approx.): 69.3 sq. m ( 745.9 sq. ft)

## Dexters

Islington  
76 Upper Street  
London  
N1 0NU  
Sales  
020 7483 6373

Energy Rating: C. We aim to make our particulars both accurate and reliable. However they are not guaranteed; nor do they form part of an offer or contract. If you require clarification on any points then please contact us, especially if you're traveling some distance to view. Please note that appliances and heating systems have not been tested and therefore no warranties can be given as to their good working order.

 **RICS** | Regulated  
Estate Agent  
and Letting Agent

[dexters.co.uk](https://www.dexters.co.uk)