



## Charleston Street, SE17

### £550,000

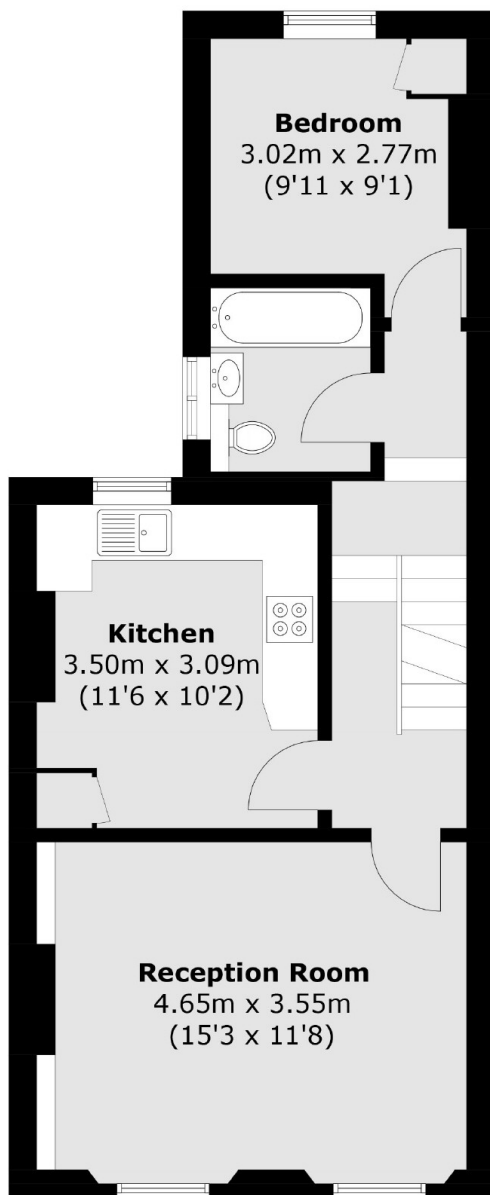
This three bedroom split level conversion is in good condition and ready for the next buyer to make it their own. Split over the first and second floors and at 919sq.ft, this period home has a lovely bright reception room, a separate kitchen and a family bathroom. Sold with no onward chain.

Charleston Street is a quiet residential street, just moments from Walworth Road where there is a vast array of shops and amenities. Elephant and Castle mainline and Tube station (Northern & Bakerloo Lines) is just a short walk away as are many bus routes.

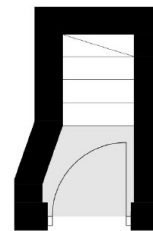
### Features

- Three Bedrooms
- Split Level
- 919sq.ft
- No Onward Chain
- Great Location
- Separate Kitchen

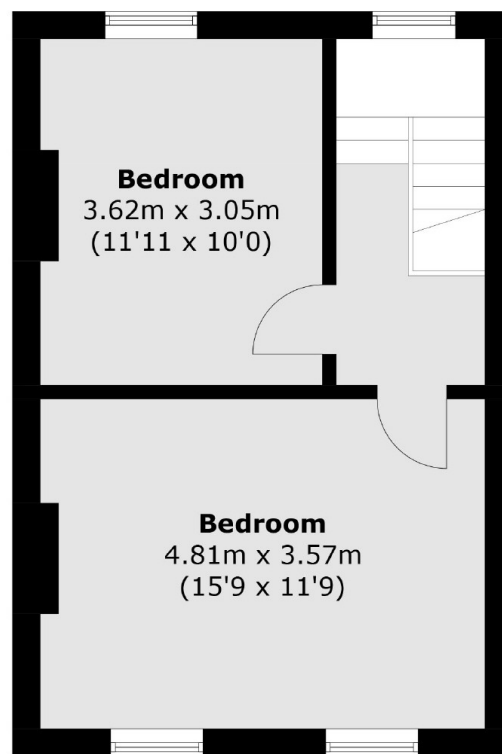
# Charleston Street, London, SE17



**First Floor**



**Ground Floor**



**Second Floor**

Total area (approx.): 85.4 sq. m (919.2 sq. ft)