



Canterbury Place, SE17

£450,000

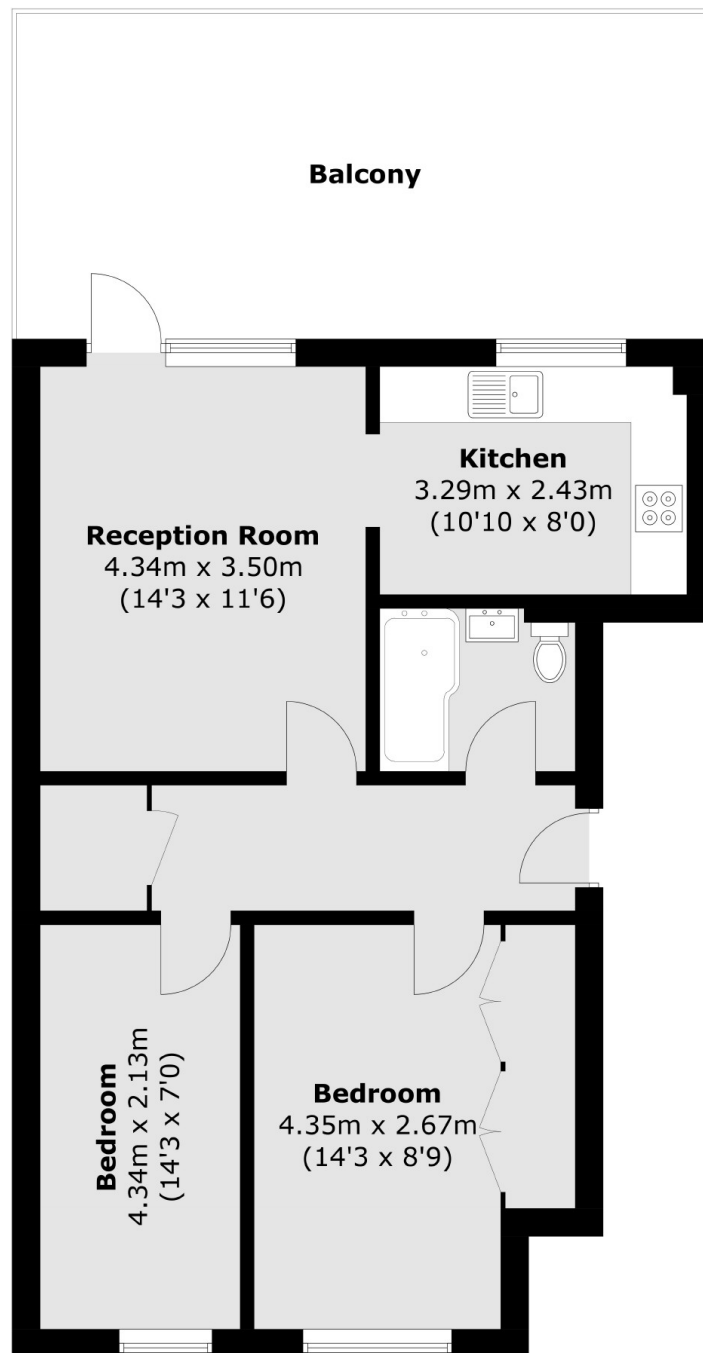
A first floor flat with two double bedrooms and an impressive private south east facing terrace. The property is flooded with light and has a large reception room which combines brilliantly with the separate kitchen, benefitting from direct access onto the terrace, which is perfect for those who love to entertain. Furthermore the property has plenty of built in storage.

Quietly tucked away within easy reach of Elephant and Castle and Kennington, arguably one of the most exciting areas, with its rapid growth and vast array of local trendy amenities. Access to Northern and Bakerloo Lines provide easy access into the West End & City.

Features

Private Terrace
Two Double Bedrooms
Excellent Location
Great Condition
Ample Storage
664 Square Foot

Canterbury Place, London, SE17



Total area (approx.): 61.7 sq. m (664.1 sq.ft)
Balcony (approx.): 26.0 sq. m (279.8 sq. ft)

Dexters

Kennington
323 Kennington Road
London
SE11 4QE
Sales
0207 650 5102

Energy Rating: C. We aim to make our particulars both accurate and reliable. However they are not guaranteed; nor do they form part of an offer or contract. If you require clarification on any points then please contact us, especially if you're traveling some distance to view. Please note that appliances and heating systems have not been tested and therefore no warranties can be given as to their good working order.

 **RICS** | Regulated
Estate Agent
and Letting Agent

[dexters.co.uk](https://www.dexters.co.uk)