

Searles Road, SE1

£1,100,000

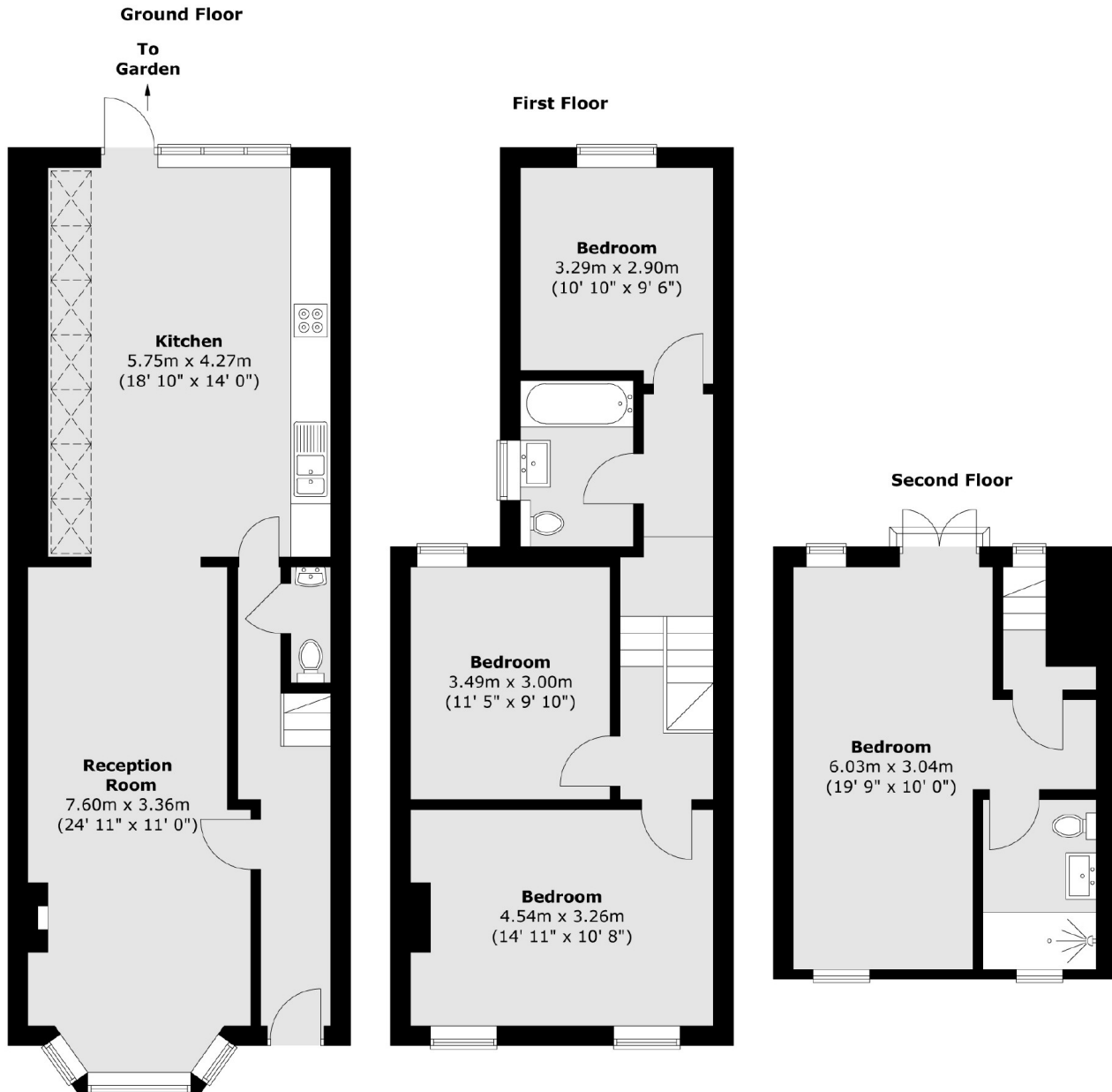
A wonderful South Facing four bedroom period home at 1,443sq.ft. Split over three floors the property has an abundance of reception space, benefitting from a bay fronted reception room that leads into a beautifully bright open plan kitchen/diner complete with bi-fold doors onto the private rear garden. Furthermore there is a downstairs w/c, two bathrooms and the property is being sold with no onward chain .

Searles Road is a quiet street within a short walk of great transport links. There are many bus routes providing good access to the City and West end. Salisbury Row Park is just moments away as is Bermondsey Street with it's wealth of bars, boutiques and restaurants.

Features

- Four Bedrooms
- Open Plan Kitchen
- Two Bathrooms
- South Facing Garden
- Quiet Location
- No Onward Chain

Searles Road, London, SE1



Total area (approx.) : 134.1 sq. m (1443 sq. ft)
Total balcony area (approx.) : 0.3 sq. m (3 sq. ft)

Dexters

Kennington
323 Kennington Road
London
SE11 4QE
Sales
0207 650 5102

Energy Rating: D. We aim to make our particulars both accurate and reliable. However they are not guaranteed; nor do they form part of an offer or contract. If you require clarification on any points then please contact us, especially if you're traveling some distance to view. Please note that appliances and heating systems have not been tested and therefore no warranties can be given as to their good working order.

 **RICS** | Regulated
Estate Agent
and Letting Agent

[dexters.co.uk](https://www.dexters.co.uk)