



## Morat Street, SW9

£524,950

A beautiful 651sq.ft one/two bedroom garden flat. The property has a bright bay-fronted living room, plenty of character throughout, a combined kitchen/reception room and direct access onto a private rear garden.

Quietly located between both Clapham Road and Brixton Road. This brilliantly connected property is within a short walk of Oval and Stockwell tube stations, plenty of bus links and the green spaces of Kennington park.

### Features

Garden Flat  
Excellent Finish  
Fantastic Entertaining Space  
Potential Second Bedroom  
651sq.ft



## Morat Street, SW9

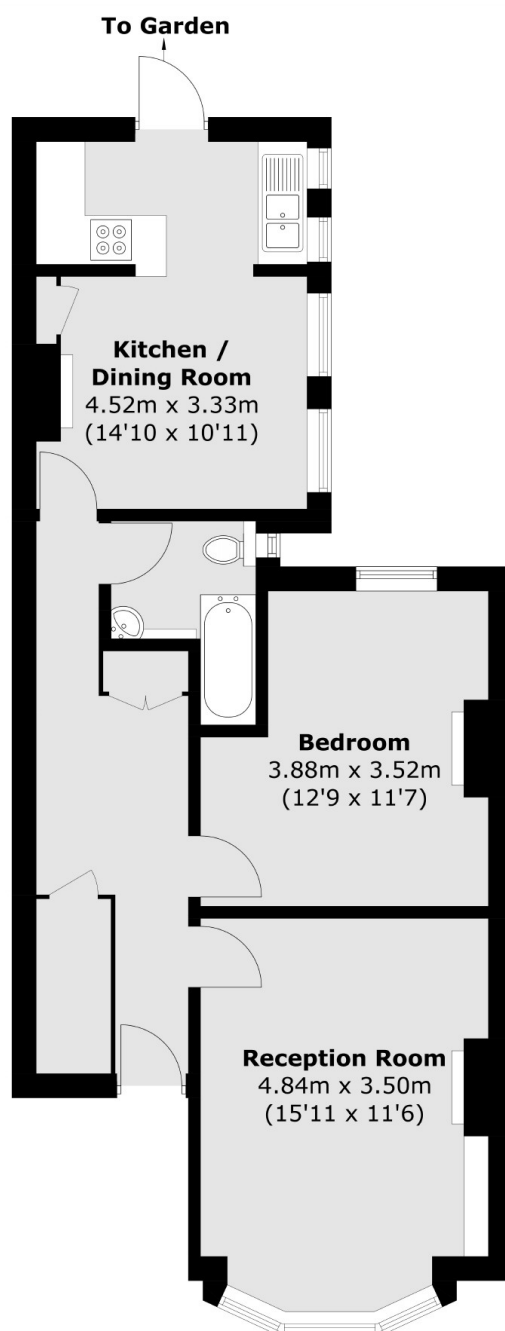
This fabulous home has a wonderful bay fronted reception room complete with high ceilings, a feature fireplace and more ceiling detail. Given the size of the property this lovely room could also function as a second bedroom. The peaceful master bedroom enjoys views over the rear garden and has bespoke fitted wardrobes.

The beautifully arranged reception space, combined with the sleek fitted kitchen is the real focal point and a great space to entertain guests. There is direct access onto a private side return garden which has a smart decked area with space for a seating area and BBQ.

The property has been finished beautifully from top to bottom with great attention to detail. There is excellent storage throughout the property and it is being sold with no onward chain.



# Morat Street, London, SW9



Total area (approx.): 60.5 sq. m (651.2 sq. ft)