



Lambeth Walk, SE11

£485,000

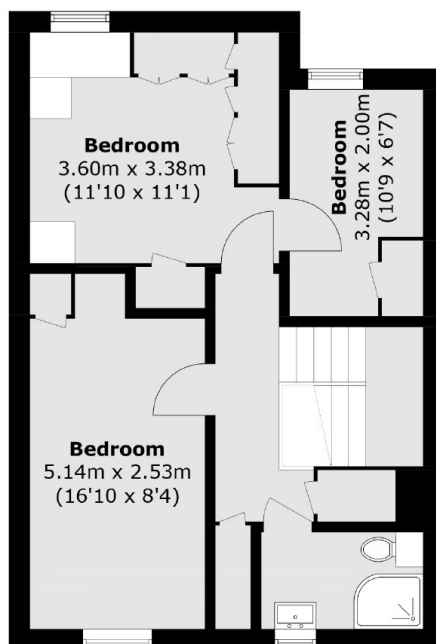
A bright and spacious flat split over the second and third floors. The 18ft reception room provides space for both living and dining areas and benefits from direct access onto a private balcony with excellent views. There is a separate kitchen, storage and a W/C. Upstairs there are two large double bedrooms each with built-in wardrobes. Furthermore there is a third bedroom, a family bathroom and the property is being sold with no onward chain.

Quietly located moments from Kennington, the River Thames & Westminster. There are excellent transport links nearby with both Kennington Tube and Vauxhall Mainline station just a short stroll away.

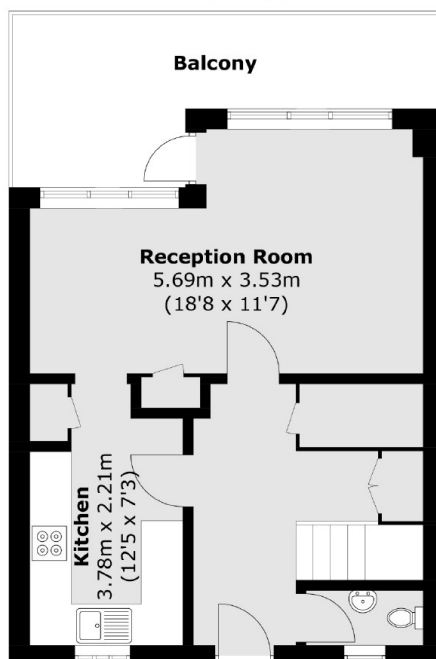
Features

- Three Bedrooms
- 936sq.ft
- End of Chain
- Private Balcony
- Split Level
- Excellent Location

Lambeth Walk, London, SE11



Third Floor



Second Floor

Total area (approx.): 87.0 sq. m (936.4 sq. ft)
Balcony: 11.2 sq. m (120.5 sq. ft)