



Clapham Road, SW9

£425,000

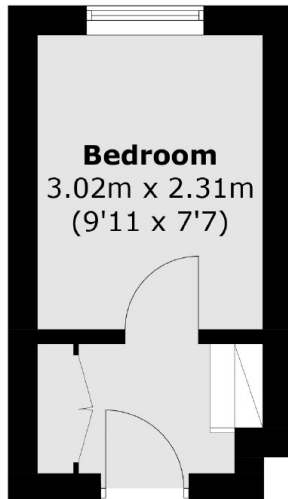
A spacious Georgian, two double bedroom, split level apartment. Situated on the first floor, this flat is in excellent condition throughout, has a modern separate kitchen and fantastic ceiling heights. Readily available with no onward chain.

Positioned at the top of Clapham Road, you are a matter of steps away from Oval Station with Northern Line services and frequent buses. Surrounded by great parks, brilliant pubs and independent coffee shops, everything you need is on your doorstep, including the weekly Oval farmers market.

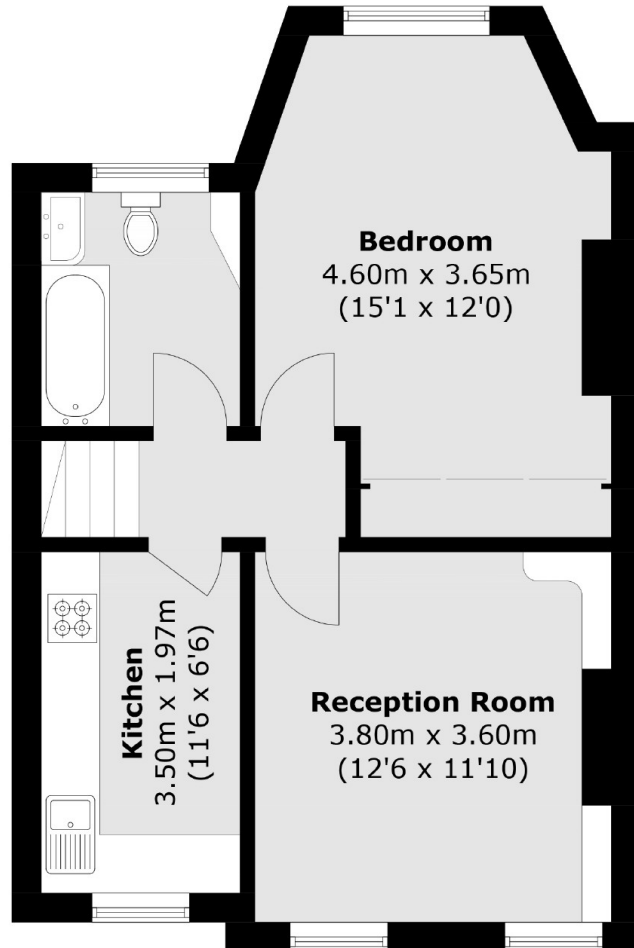
Features

Two Double Bedrooms
Georgian Conversion
Excellent Condition
0.2 Miles From Oval
Chain Free
Secondary Glazing

Clapham Road,
London, SW9



Ground Floor



First Floor

Total area (approx.): 58.2 sq. m (626.4 sq. ft)

Dexters

Kennington
323 Kennington Road
London
SE11 4QE
Sales
0207 650 5102

Energy Rating: C. We aim to make our particulars both accurate and reliable. However they are not guaranteed; nor do they form part of an offer or contract. If you require clarification on any points then please contact us, especially if you're traveling some distance to view. Please note that appliances and heating systems have not been tested and therefore no warranties can be given as to their good working order.

 **RICS** | Regulated
Estate Agent
and Letting Agent

[dexters.co.uk](https://www.dexters.co.uk)