



## Clapham Road, SW9

### £469,950

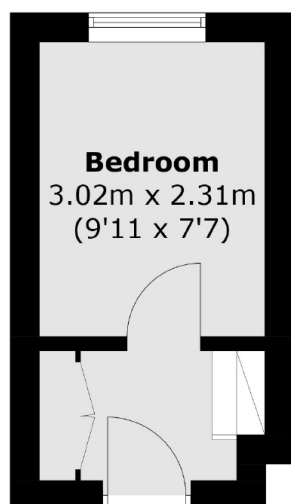
A spacious Georgian, two double bedroom, split level apartment. Situated on the first floor, this flat is in excellent condition throughout, has a modern separate kitchen and fantastic ceiling heights. Readily available with no onward chain.

Positioned at the top of Clapham Road, you are a matter of steps away from Oval Station with Northern Line services and frequent buses. Surrounded by great parks, brilliant pubs and independent coffee shops, everything you need is on your doorstep, including the weekly Oval farmers market.

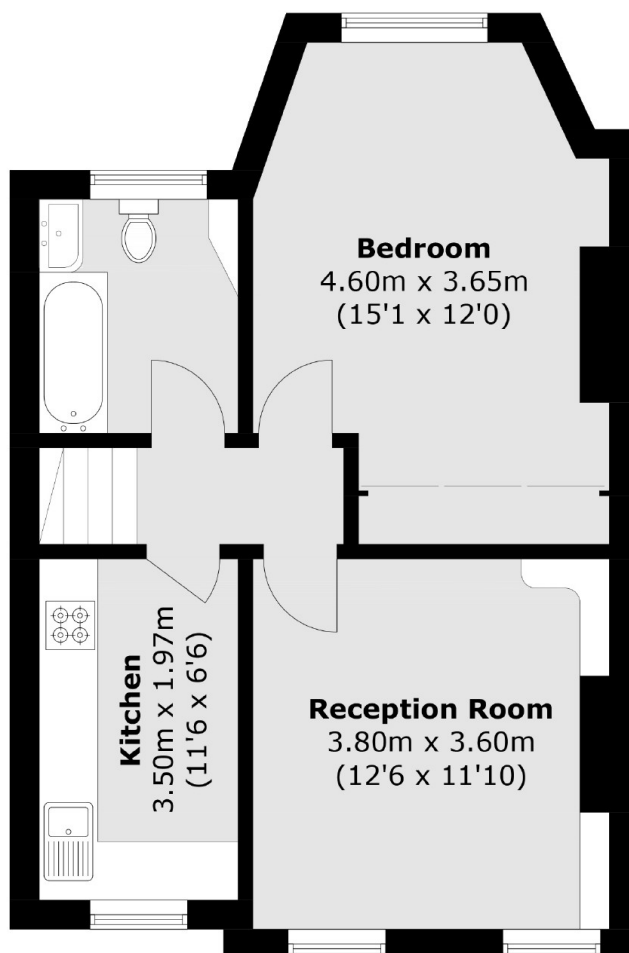
### Features

- Two Double Bedrooms
- Georgian Conversion
- Excellent Condition
- 0.2 Miles From Oval
- Chain Free
- Secondary Glazing

# Clapham Road, London, SW9



**Ground Floor**



**First Floor**

Total area (approx.): 58.2 sq. m (626.4 sq. ft)