



Goldsboro Road, SW8

£695,000

A fabulous three bedroom, two bathroom split level flat in excellent condition throughout. The property has an abundance of reception space combining brilliantly with a stylish kitchen. The private roof terrace is an absolute sun trap and a perfect space for entertaining.

Goldsboro Road is a quiet street within a short walk of Nine Elms and Battersea Park. Nine Elms Tube station (Northern Line) and plenty of bus links are just moments away and there is good access to plenty of bars, restaurants, pubs and supermarkets such as Sainsburys and Waitrose.

Features

- Three Bedrooms
- Private Roof Terrace
- Excellent Condition
- Share Of The Freehold
- Split Level
- Convenient Location



Goldsboro Road, SW8

Split over the first and second floor this versatile home benefits from a spacious double bedroom at the rear a single bedroom to the front and a beautifully bright reception room to the front that combines seamlessly with the stylish modern kitchen benefitting from space for dining. Furthermore there is smart family bathroom.

The master bedroom is located on the top floor, complete with a sumptuous ensuite comprising of a free standing bath. There is eaves storage and built in wardrobes. There is then access onto the private roof terrace which is drenched in sunlight and a great space for barbequing and entertaining.

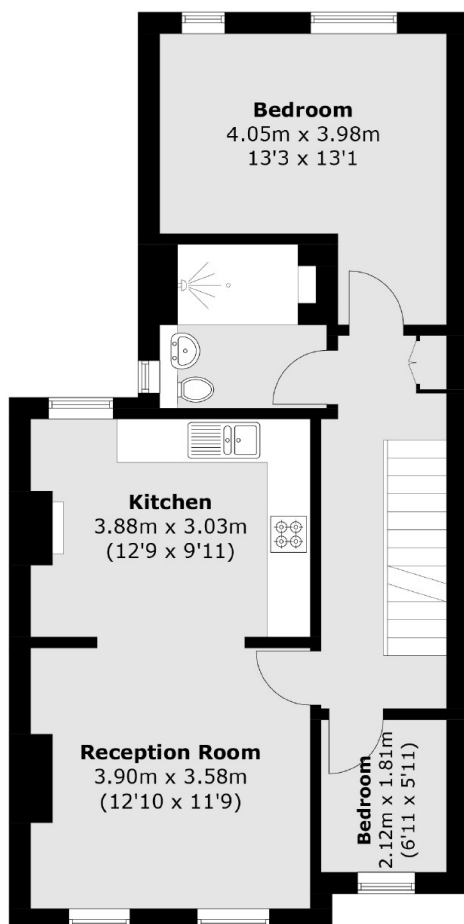
The property has a share of the freehold and is in great condition throughout leaving the next buyer nothing to do but move in.



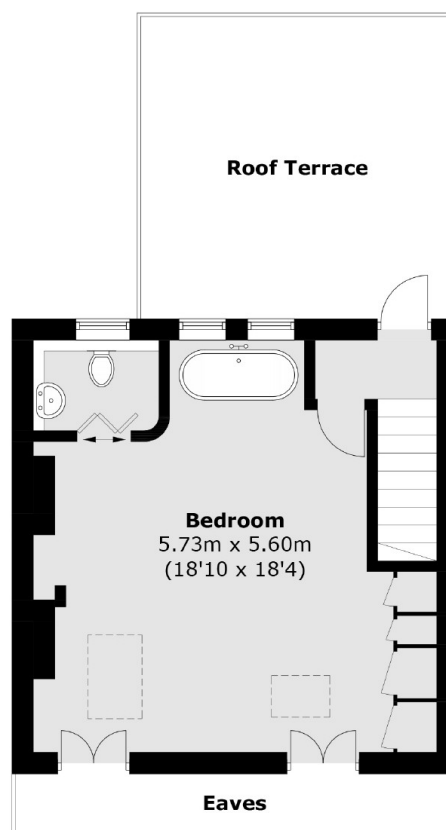
Goldsboro Road, London, SW8



Ground Floor



First Floor



Second Floor

Total area (approx.): 94.7 sq. m (1019.3 sq. ft)
(Excluding Eaves)
Roof Terrace area (approx.): 18.3 sq. m (196.9 sq. ft)