



## Boyson Road, SE17

### £525,000

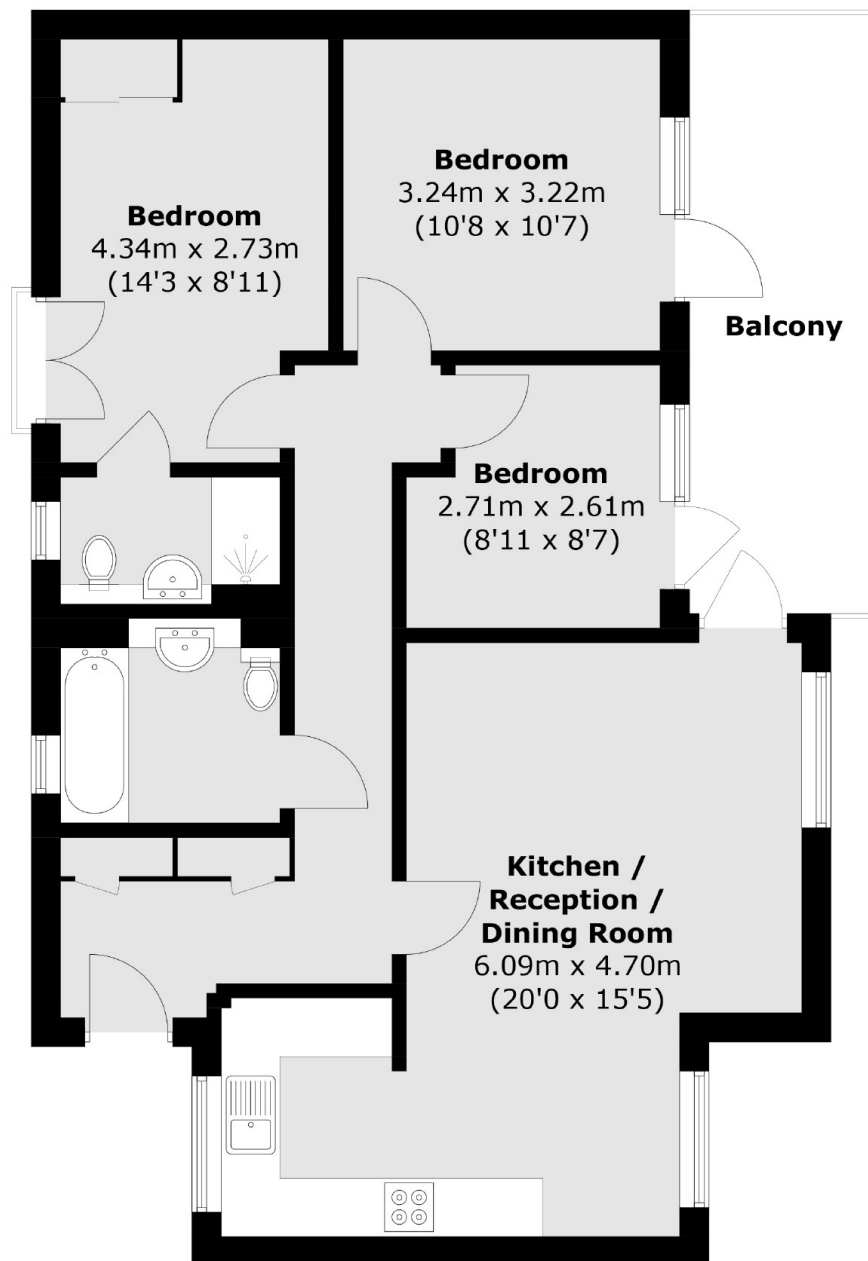
A chain free, three bedroom, two bathroom apartment in excellent condition throughout. The wonderful living room is flooded with natural light and provides space for both living and dining areas. The modern fitted kitchen has plenty of worktop space and combines brilliantly with the reception area creating an excellent space for those who love to entertain. Doors lead out onto a lovely south facing private balcony which has space for dining and lovely views into the well maintained courtyard gardens. Furthermore there are three good size bedrooms with an ensuite to the master bedroom.

Roffo Court is quietly located just off the Walworth Road, within easy reach of Elephant & Castle mainline and tube stations (Northern & Bakerloo Lines). There is an excellent array of local shops, restaurants and coffee shops close as are the green spaces of Burgess Park. This is the perfect position for the busy commuter with regular bus links going in all directions.

### Features

- Three Bedroom
- Two Bathrooms
- Balcony
- Large Reception
- Stunning Kitchen
- Modern Development

Boyson Road,  
London, SE17



Total area (approx.): 78.6 sq. m (846.0 sq. ft)  
Balcony area : 11.7 sq. m (125.9 sq. ft)