



Oakden Street, SE11

£550,000

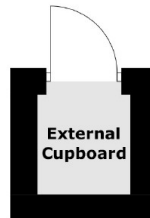
Offers in Excess of £600,000 A fabulous two bedroom split level home giving the sense of living in a house. Benefitting from its own private entrance there is a lovely bay fronted reception room offering the flexibility for dining. The separate modern fitted kitchen is sleek in design and there is access onto a communal garden. The raised ground floor has two bedroom, a family bathroom and the property is being sold with no onward chain.

Oakden Street is conveniently located, just moments from pubs, eateries and local shops. High in community spirit, transport links are unbeatable with Kennington, Oval and Vauxhall stations close by, within a short stroll of Kennington Park and within easy reach of the City and West End.

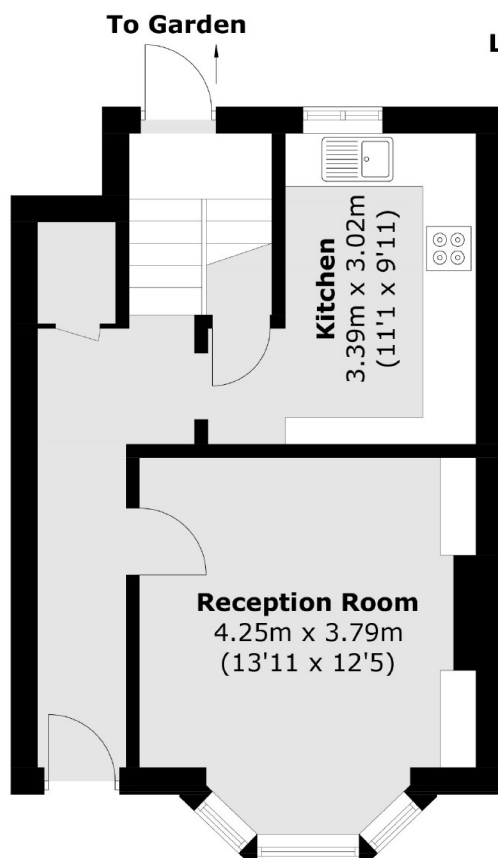
Features

- Two Bedrooms
- Split Level
- Excellent Location
- No Onward Chain
- Communal Garden
- High Ceilings

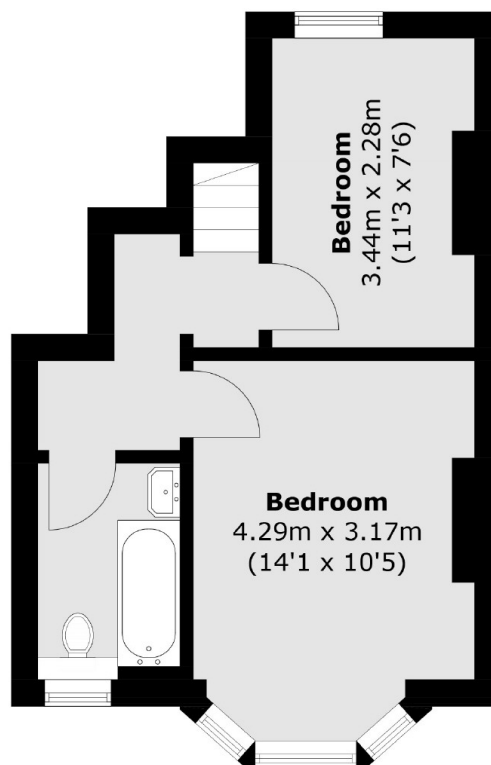
Oakden Street, London, SE11



(Not Shown In Actual
Location / Orientation)



Basement



Ground Floor

Total area (approx.): 66.5 sq. m (715.8 sq. ft)
(Including Basement)
External Cupboard: 1.3 sq. m (14.0 sq. ft)