



St. Gabriel Walk, SE1

£950,000

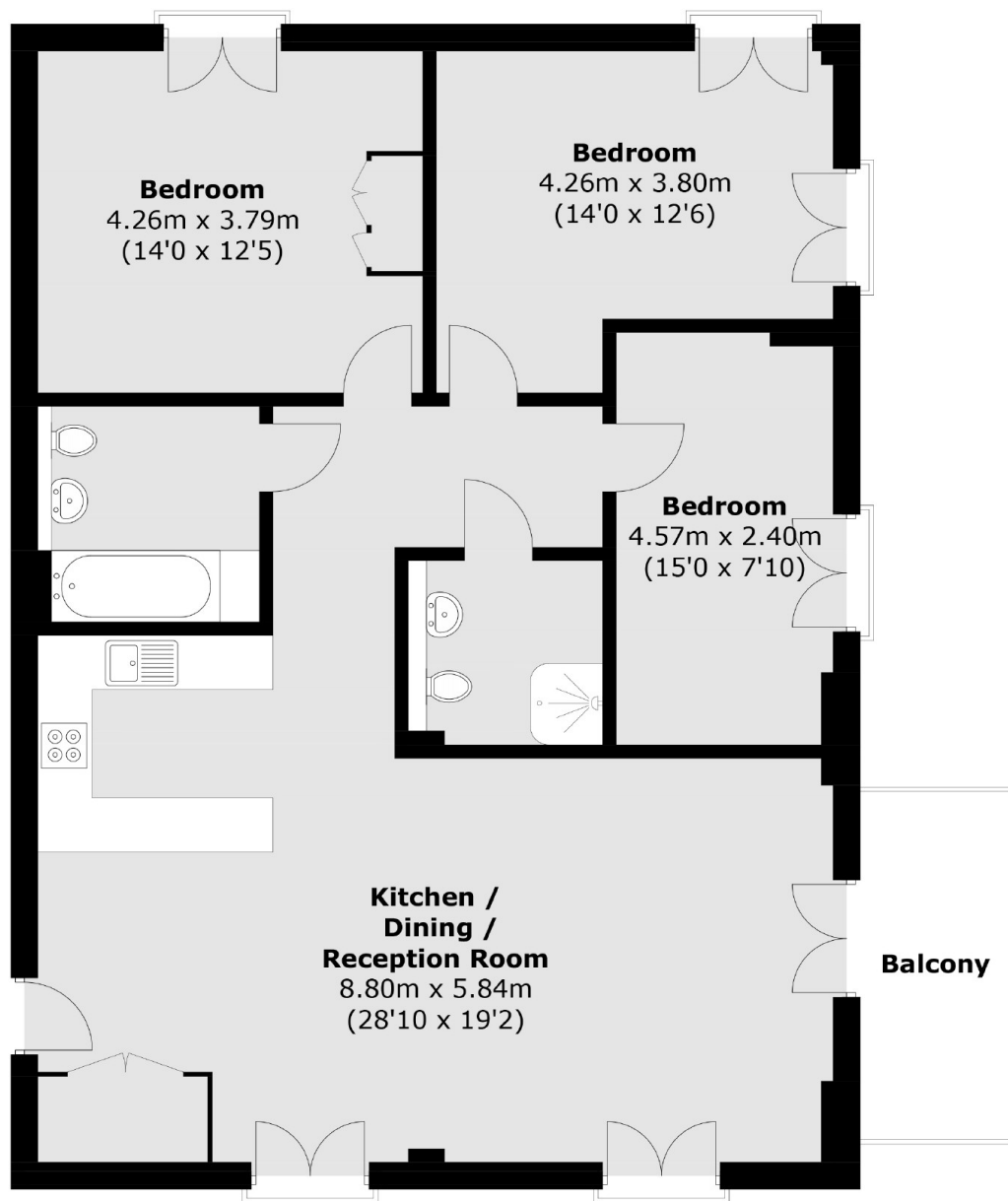
An exceptional three bedroom, two bathroom apartment in excellent condition throughout. The property benefits from a vibrant open plan reception room with dual aspect views and a private balcony, all of which draw in lots of natural light. The high specification kitchen has a large breakfast bar, perfect for those who love to cook and entertain. Furthermore there direct access to the 24 hour concierge, well kept communal gardens and a secure underground parking space.

Conveniently located in Zone1, within a short walk of Elephant and Castle station providing national rail, Northern and Bakerloo lines. There are a number of restaurant's and bus links close by.

Features

- Three Bedrooms
- Central Location
- Two Bathrooms
- Fantastic Entertaining Space
- Allocated Parking Space
- 24 Hour Concierge

St. Gabriel Walk, London, SE1



Total area (approx.): 109.9 sq. m (1,183.0 sq. ft)
Balcony : 6.5 sq. m (70.0 sq. ft)