



## Cranworth Gardens, SW9

£599,950

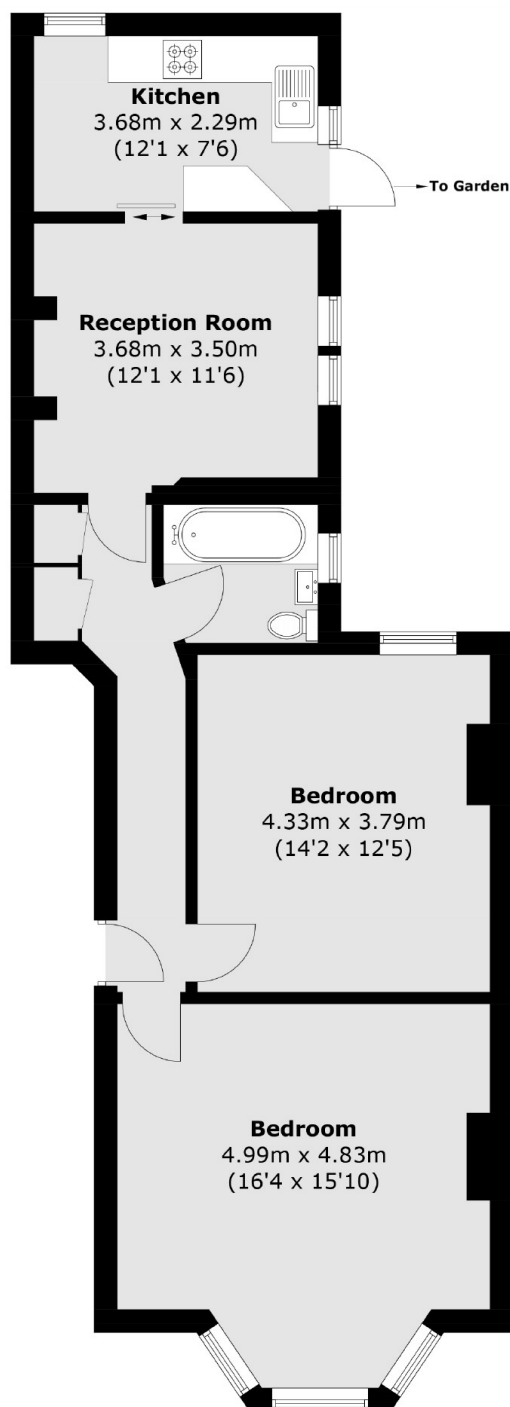
A two double bedroom ground floor apartment in a Victorian mansion block. To the front, a grand bedroom complete with a large bay window. The second bedroom is just as generous, with tall windows and enough room for storage and a desk setup. Through the hall, at the back of the property, you will find a semi partitioned kitchen/living space, with open green views of the communal gardens. This property is offered with no onward chain and a share of freehold.

Quietly located on a beautiful tree lined street, nestled between both Clapham Road and Brixton Road. This brilliantly connected property is within an easy walk of Brixton, Oval and Stockwell tube stations. There are plenty of bus links, local shops, cafes and the green spaces of Kennington park close by.

### Features

- Two Double Bedrooms
- Victorian
- Share Of Freehold
- No Chain
- Communal Gardens
- Excellent Transport Links

# Cranworth Gardens, London, SW9



Total area (approx.): 73.0 sq. m (785.8 sq. ft)

## Dexters

Kennington  
323 Kennington Road  
London  
SE11 4QE  
Sales  
0207 650 5102

Energy Rating: D. We aim to make our particulars both accurate and reliable. However they are not guaranteed; nor do they form part of an offer or contract. If you require clarification on any points then please contact us, especially if you're traveling some distance to view. Please note that appliances and heating systems have not been tested and therefore no warranties can be given as to their good working order.

 **RICS** | Regulated  
Estate Agent  
and Letting Agent

[dexters.co.uk](https://www.dexters.co.uk)