



## Wooler Street, SE17

### £485,000

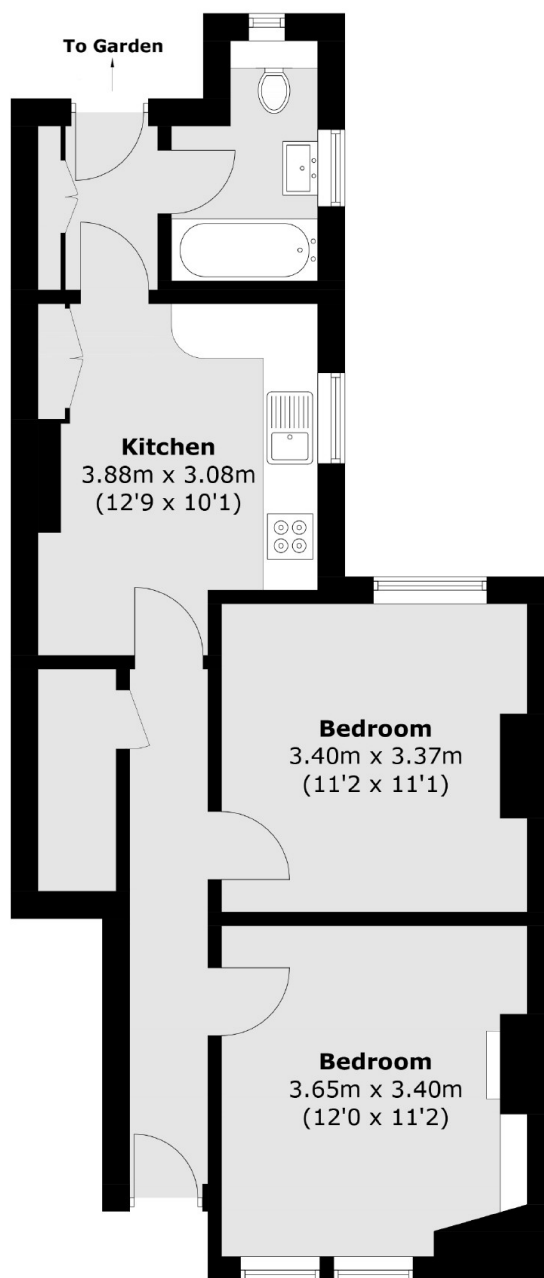
This delightful one-bedroom, ground floor flat offers a perfect blend of period charm and modern comfort. Bright and spacious, the flat is filled with natural light, showcasing beautiful period features such as high ceilings, wooden floors, a fire place and sash windows. Benefitting from a wonderful eat-in kitchen and from direct access onto a beautifully designed south facing private garden offering a peaceful outdoor retreat.

Peacefully located on Wooler Street only a short walk away from Elephant and Castle, arguably one of the most exciting areas, with its rapid growth and vast array of local trendy amenities. Access to Northern and Bakerloo Lines provide easy access into the City and the West End.

### Features

- One Bedroom
- Share Of Freehold
- Excellent Condition
- Private Garden
- Quiet Location
- Character Features

# Wooler Street, London, SE17



Total area (approx.): 51.3 sq. m (552.2 sq. ft)

## Dexters

Kennington  
323 Kennington Road  
London  
SE11 4QE  
Sales  
0207 650 5102

Energy Rating: C. We aim to make our particulars both accurate and reliable. However they are not guaranteed; nor do they form part of an offer or contract. If you require clarification on any points then please contact us, especially if you're traveling some distance to view. Please note that appliances and heating systems have not been tested and therefore no warranties can be given as to their good working order.

 **RICS** | Regulated  
Estate Agent  
and Letting Agent

[dexters.co.uk](https://www.dexters.co.uk)