



St. George Wharf, SW8

£1,750,000

A remarkable three bedroom fifth floor apartment with an abundance of reception space. Floor to ceiling windows draw in lot's of natural light and provide amazing view upstream towards the Iconic Battersea Power Station and of the evening sunset.

One St George Wharf is located on the banks of the Thames. Benefitting from unbeatable transport links being just moments from Vauxhall station (Victoria line) tube and National Rail. There is also a River taxi service from St George Wharf Pier with great access to the city and beyond.

Features

- Three Bedrooms
- Two Bathrooms
- Iconic Tower
- High Spec Apartment
- Excellent Views
- 24 Concierge
- Secure Allocated Parking



St. George Wharf, SW8

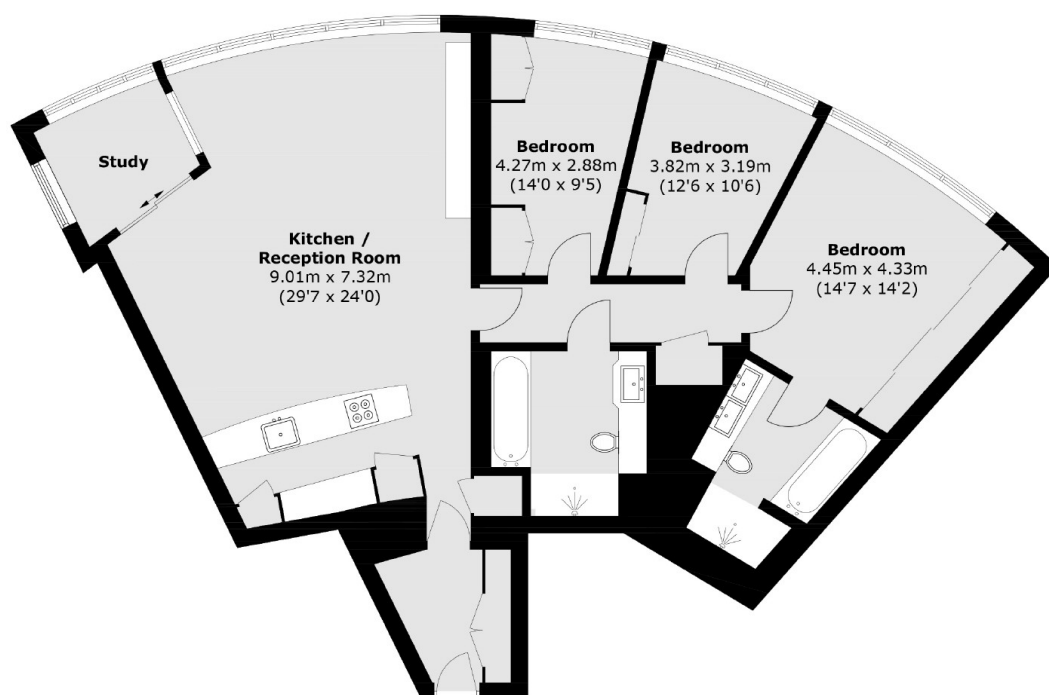
This sought after riverside flat has an open plan high specification fitted kitchen which combines brilliantly with the spacious living room and winter garden to create a fabulous space to relax or entertain guests. There is a large principle bedroom with built in wardrobes an sumptuous en-suite bathroom. Furthermore there is a second double bedroom with built in wardrobes a third single bedroom and a lovely modern family bathroom.

There are floor to ceiling windows throughout the apartment, great storage and an inbuilt control panel to control the lighting, the blinds and air conditioning system.

The apartment benefits from a first class 24 hour concierge service and valet parking with access to the secure and allocated underground parking space. The Tower has a gym with views of the river, a luxury spa area with a pool also with river views and a sauna and steam room. Furthermore there is a cinema room and conference facilities.



St. George Wharf, London, SW8



Total area (approx.): 120.0 sq. m (1,291.7 sq. ft)

Dexters

Kennington
323 Kennington Road
London
SE11 4QE
Sales
0207 650 5102

Energy Rating: B. We aim to make our particulars both accurate and reliable. However they are not guaranteed; nor do they form part of an offer or contract. If you require clarification on any points then please contact us, especially if you're traveling some distance to view. Please note that appliances and heating systems have not been tested and therefore no warranties can be given as to their good working order.

 **RICS** | Regulated
Estate Agent
and Letting Agent

[dexters.co.uk](https://www.dexters.co.uk)