



Turner Close, SW9

£800,000

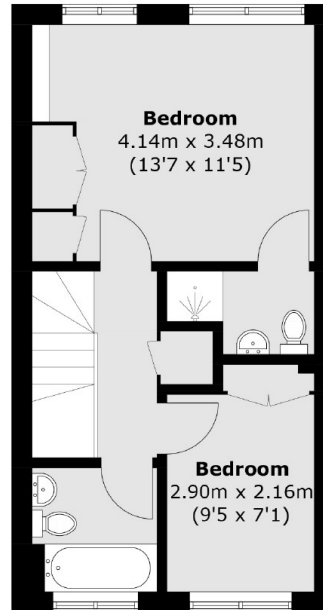
A wonderful four bedroom end of terrace townhouse split over three floors. The ground floor reception space is the real heartbeat of this lovely home and provides excellent space for living, dining areas and combines brilliantly with the kitchen. There is a lovely garden, excellent storage throughout, a separate W/C and two bathrooms. Furthermore there is an allocated gated parking space.

A peaceful location, set within a gated close with beautifully maintained gardens. This wonderful location is positioned between both Kennington Park and Myatts Fields Park and is just a short walk from Oval station (Northern Line). There are many bus services and a vast range of independent shops, bars and restaurants locally.

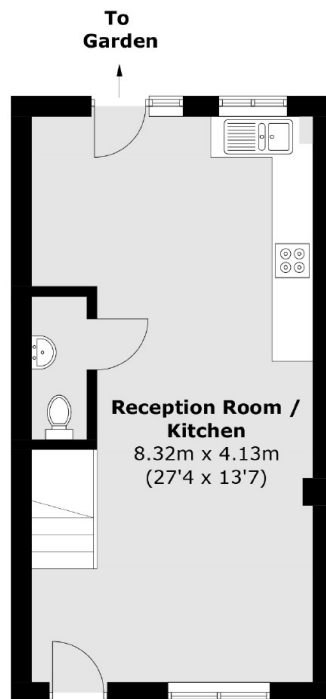
Features

- Freehold
- Three Bedrooms
- Excellent Condition
- Gated Development
- Allocated Parking Space
- Fantastic Location

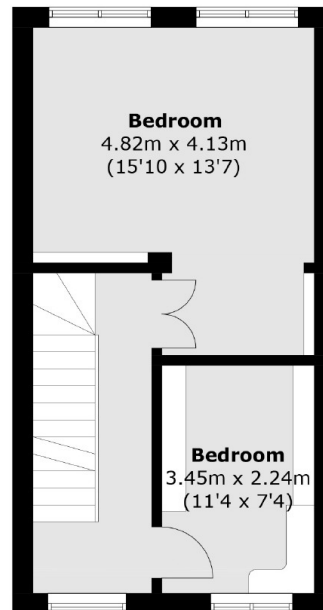
Turner Close, London, SW9



Second Floor



Ground Floor



First Floor

Total area (approx.): 103.5 sq. m (1,114.0 sq. ft)