



Rodney Road, SE17

£589,950

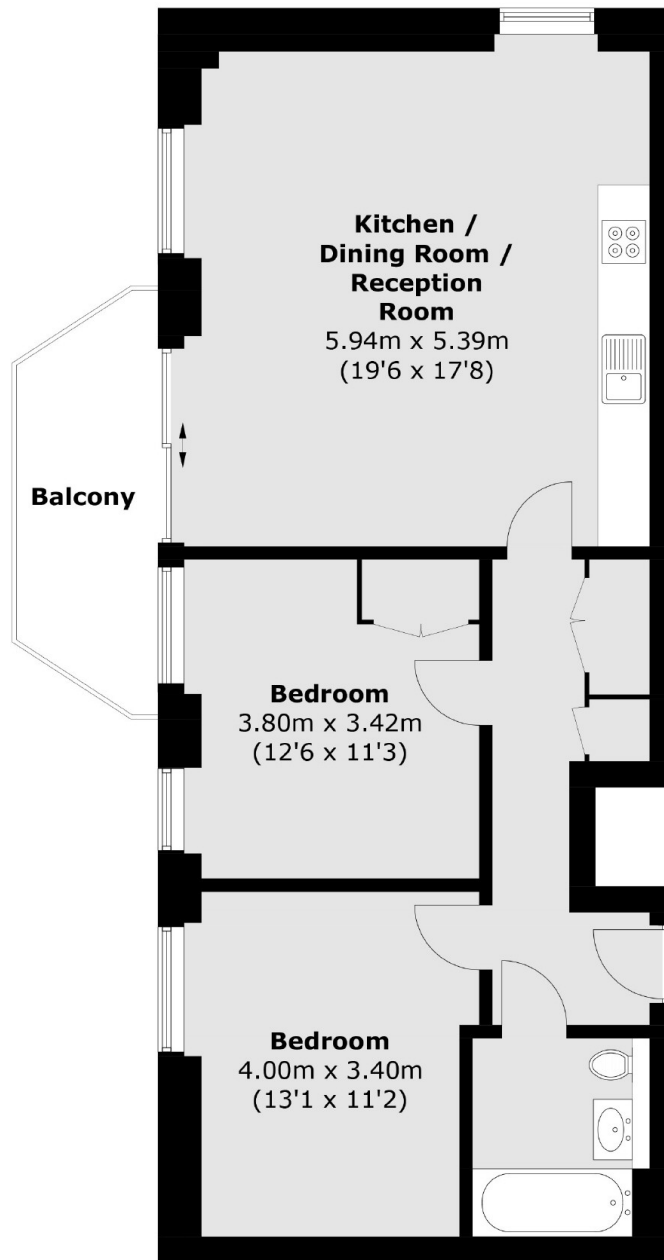
A beautiful two double bedroom apartment in excellent condition throughout. It has a fantastic open plan kitchen/ living room, access onto a balcony and is being sold with no onward chain. Furthermore there is a concierge service, access to a residents gym and a roof top growing garden.

Quietly located in Elephant and Castle, arguably one of the most exciting areas, with its rapid growth and vast array of local trendy amenities. Access to Northern and Bakerloo Lines provide easy access into the West End & City.

Features

- Two Double Bedrooms
- Excellent Condition
- No Onward Chain
- Lift
- Private Balcony
- Modern Home

Rodney Road, London, SE17



Total area (approx.): 73.9 sq. m (795.4 sq. ft)
Balcony : 6.9 sq. m (74.2 sq. ft)