



Park View Mews, SW9

£599,950

A fantastic split level maisonette with its own private entrance. There are two double bedrooms with built in wardrobes and two bathrooms. The property has its own front door, a separate W/C and a large open plan fitted kitchen/reception area which is perfect for those who love to entertain. Furthermore the property has lovely french doors that lead onto a private patio and communal gardens. Sold with no onward chain.

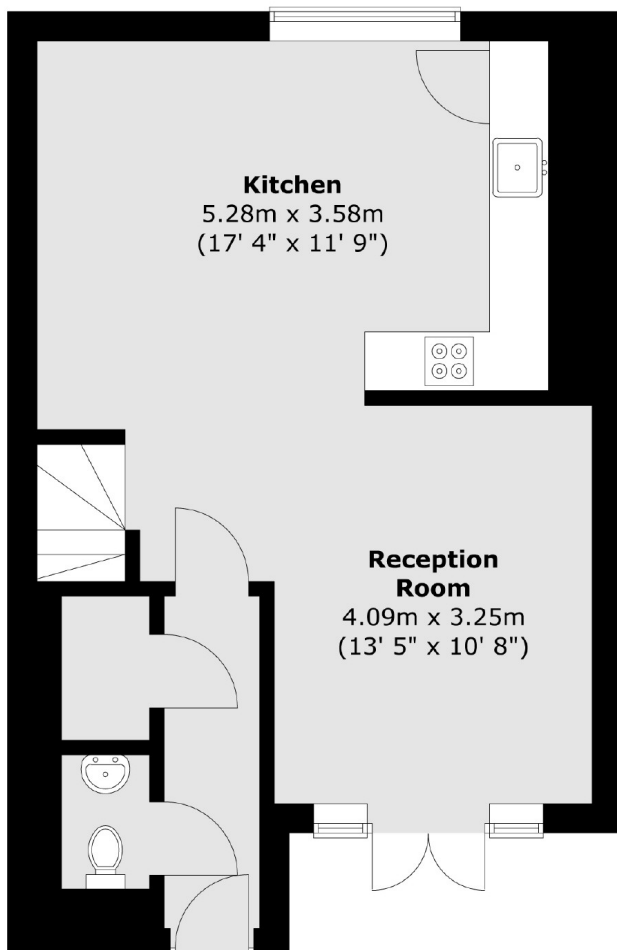
Located within a quiet gated development within easy reach of both Stockwell and Brixton tube stations (Victoria Line). There are plenty of local shops and cafes close by and plenty of bus links.

Features

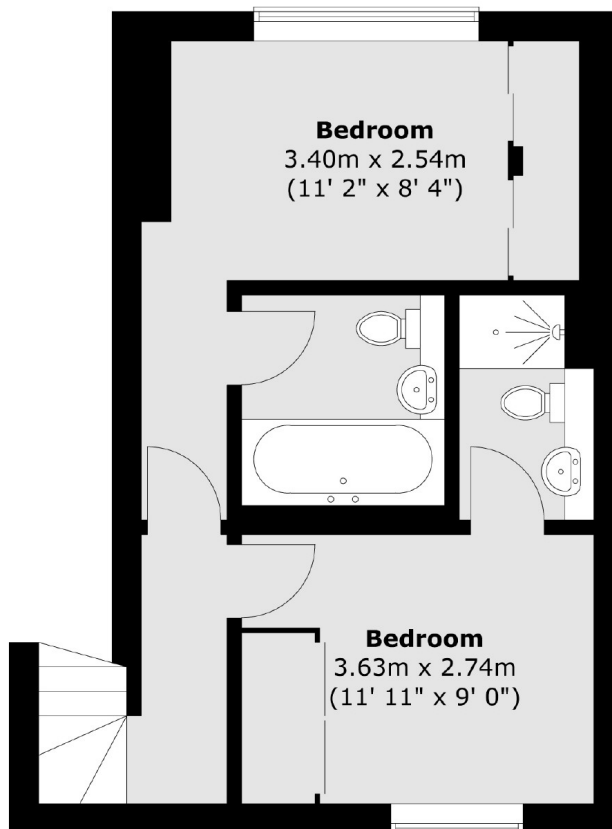
- Split Level Maisonette
- Two Double Bedrooms
- Two Bathrooms
- Quiet Gated Mews
- Secure Allocated Parking
- Private Entrance

Park View Mews, London, SW9

Ground Floor



First Floor



Total area (approx.) : 85.8 sq. m (924 sq. ft)