



Brandon Estate, SE17

£450,000

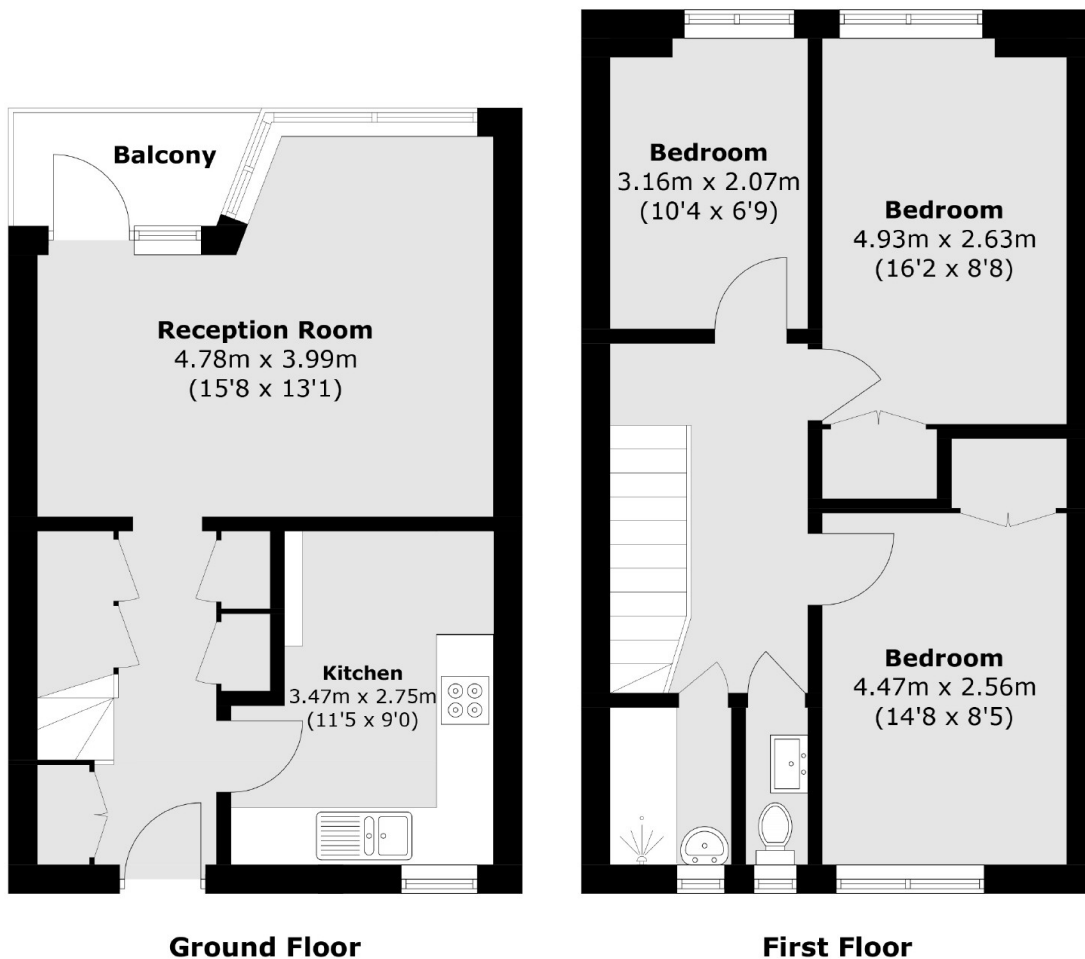
A split level three bedroom flat with a private balcony on the Brandon Estate. At 810 square feet this flat is spacious and bright with views from the reception room and balcony out onto the green communal spaces. There is a stylish modern fully fitted kitchen and the three double bedrooms on the second floor.

Molesworth House is perfectly located being just a short stroll to Kennington Park and Kennington Tube station (Northern Line). There are many local amenities close by including shops, cafes, pubs and restaurants.

Features

- Split Level
- Three Bedrooms
- Good Condition
- Fitted Stylish Kitchen
- Private Balcony
- 810 Square Foot

Brandon Estate, London, SE17



Total area (approx.): 75.3 sq. m (810.5 sq. ft)
Balcony: 2.8 sq. m (30.1 sq. ft)