



## Loughborough Street, SE11

### £385,000

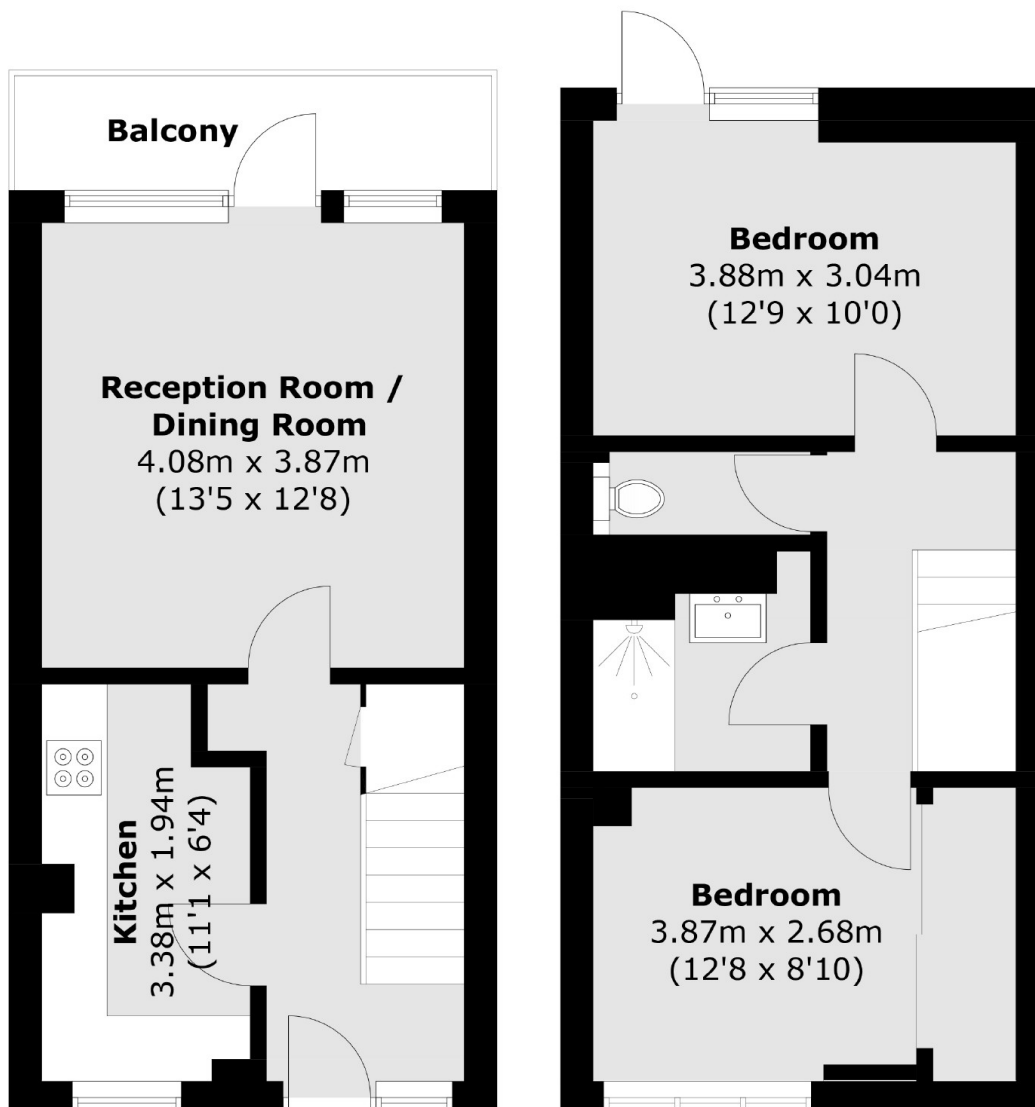
A spacious split level two double bedroom purpose built flat in good condition throughout. This seventh floor property has a large reception room with access onto a balcony, providing excellent views. Furthermore there is a modern separate kitchen, a stylish shower room and the property is being sold with no onward chain.

Conveniently located within a short walk of Vauxhall mainline station (Victoria line) and the green spaces of Kennington Park. This is quiet and central spot is just moments from pubs, eateries and local shops. Further transport links are close by with many bus routes and Oval station (Northern line) just a short walk away.

### Features

- Two Double Bedrooms
- Split Level
- Balcony
- No Onward Chain
- Central Location
- Lift

# Loughborough Street, London, SE11



**Seventh Floor**

**Eighth Floor**

Total area (approx.): 64.9 sq. m (698.5 sq. ft)  
Balcony area (approx.): 4.6 sq. m (49.5 sq. ft)