



Fitzalan Street, SE11

£535,000

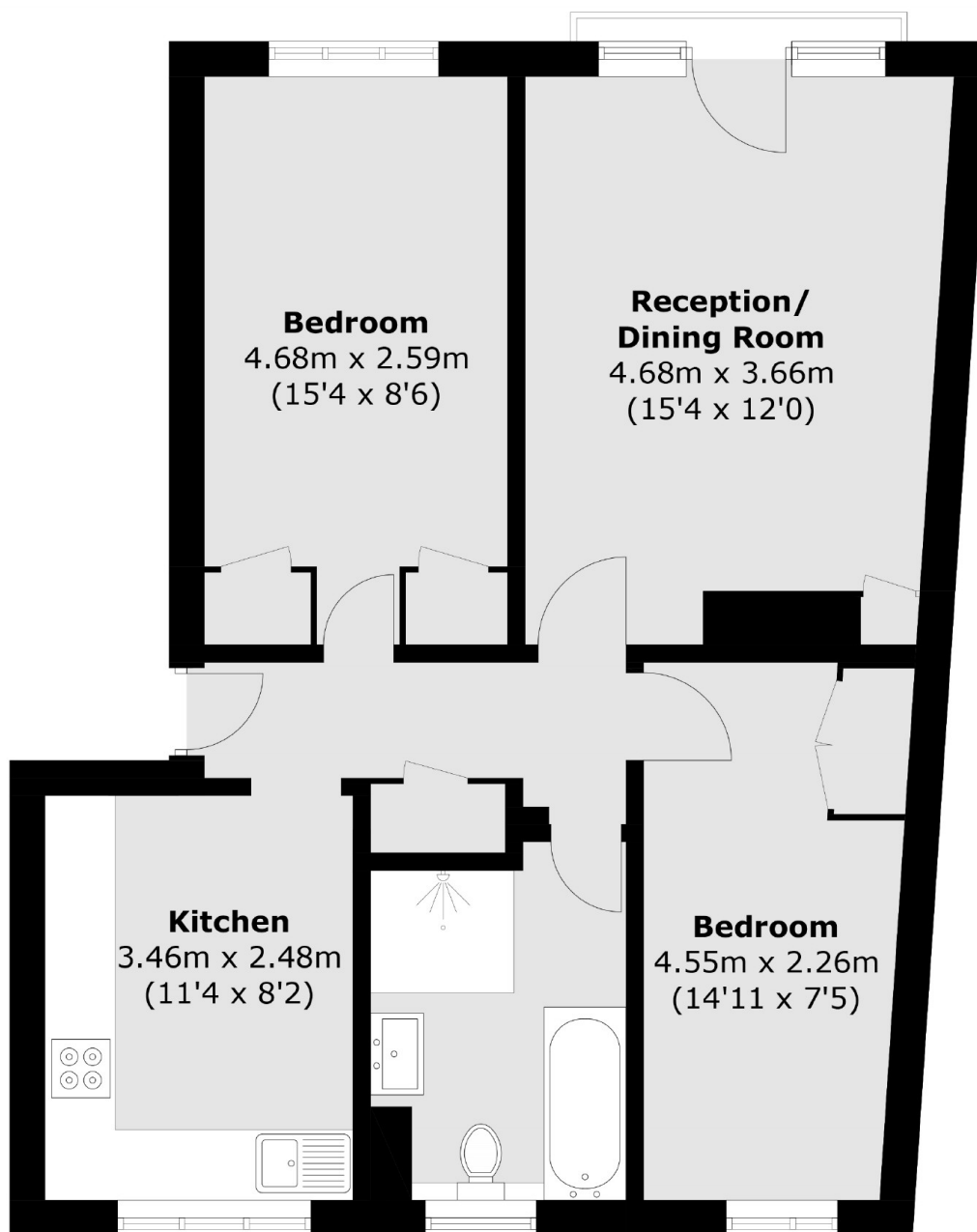
An incredibly well presented two double bedroom flat on the top floor of a low rise block offering well proportioned space throughout. The fabulous living room has space for both living and dining areas and benefits from a Juliet balcony with excellent views of Nine Elms and parkland. The well stocked kitchen has plenty of work top space and a breakfast bar. Furthermore there is a spacious bathroom with separate shower, well kept communal gardens and good storage throughout. Sold with no onward chain.

Fitzalan Street is a quiet street which sits behind the Albert Embankment. Kennington, Vauxhall, Lambeth North and Waterloo stations are all within walking distance, arguably one of the best locations for transport in London.

Features

- Two Double Bedrooms
- Excellent Condition
- Well Proportioned Rooms
- Wonderful Location
- Low Rise Block
- Bike Storage

Fitzalan Street, London, SE11



Total area (approx.): 63.4 sq. m (682.4 sq. ft)