

## Richborne Terrace, SW8

£375,000

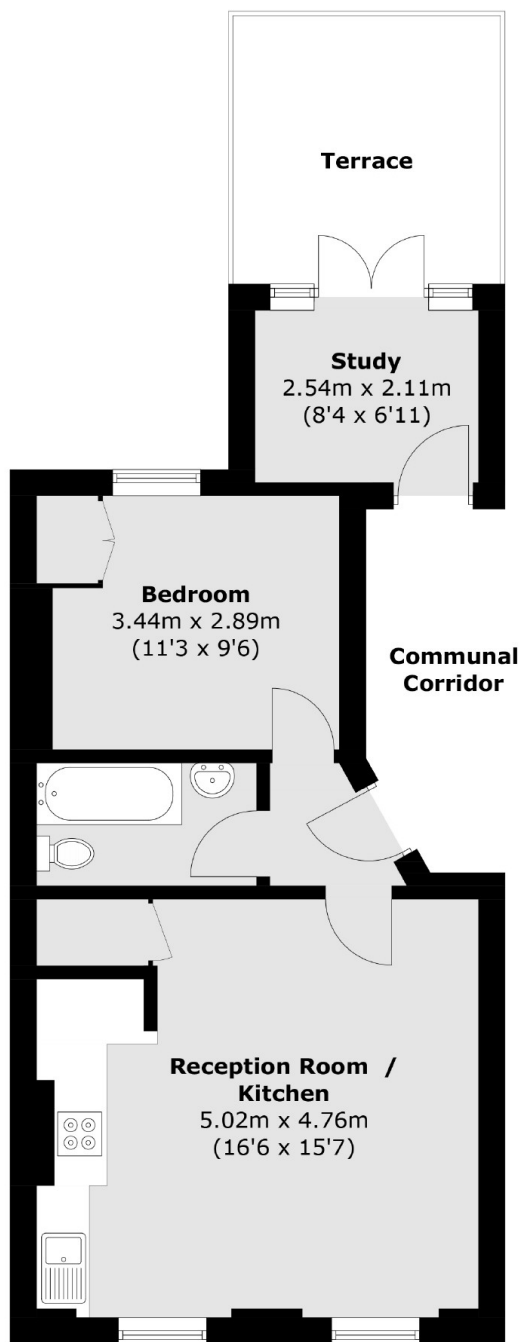
A wonderfully unique one bedroom first floor flat with a private terrace on the beautiful Richborne Terrace. This flat is perfect for a first time buyer or downsizer, it has a share of the freehold and is being sold with no onward chain.

Sought after Richborne Terrace is perfectly located to access the many transport links available including Oval, Stockwell, and Vauxhall underground stations. There are many local shops close by as is Kennington Park.

### Features

- No Onward Chain
- Period Conversion
- Private Terrace
- Quiet Location
- Share of Freehold
- High Ceilings

# Richborne Terrace, London, SW8



## First Floor

Total area (approx.): 45.9 sq. m (494.1 sq. ft)  
Terrace: 9.3 sq. m (100.0 sq. ft)