



Henshaw Street, SE17

£1,195,000

A fabulous four double bedroom character home extended and finished to an exceptional standard throughout. Sold with no onward chain the property has a cosy reception room to the front and a vibrant open plan kitchen dining area to the rear with seamless access onto the rear garden. The property has great storage throughout and is complete with a wonderful roof terrace which is a total sun trap and benefits from fantastic panoramic views including the City and the Shard

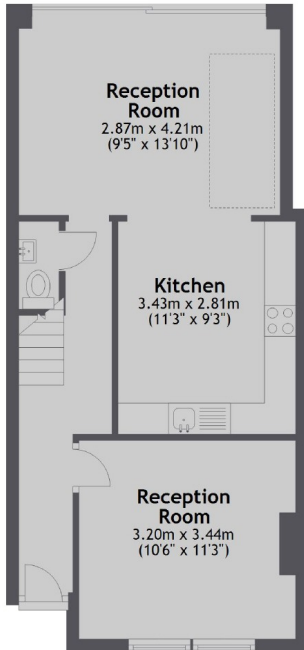
Henshaw Street is a quiet cul de sac, located in Elephant and Castle, arguably one of the most exciting areas, with its rapid growth and vast array of local trendy amenities. Access to Northern and Bakerloo Lines provide easy access into the West End & City

Features

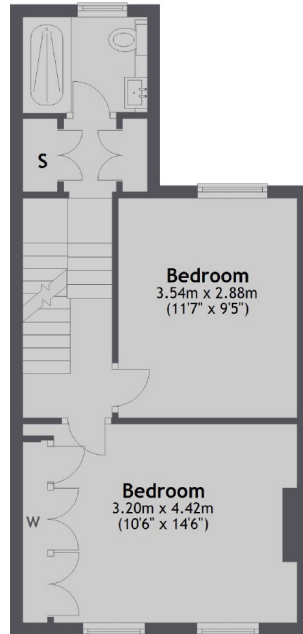
- Four Double Bedrooms
- Refurbished
- Fully Extended
- Roof Terrace
- Chain Free
- Excellent Transport Links

Henshaw Street, London, SE17

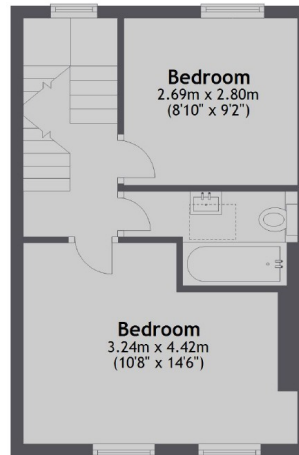
Ground Floor



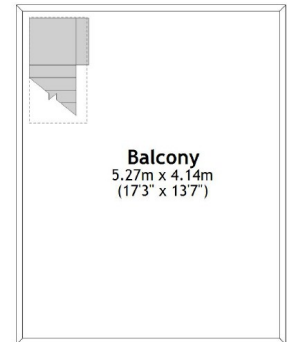
First Floor



Second Floor



Third Floor



Total area: approx. 107.4 sq. metres (1155.8 sq. feet)