



Lorrimore Road, SE17

£500,000

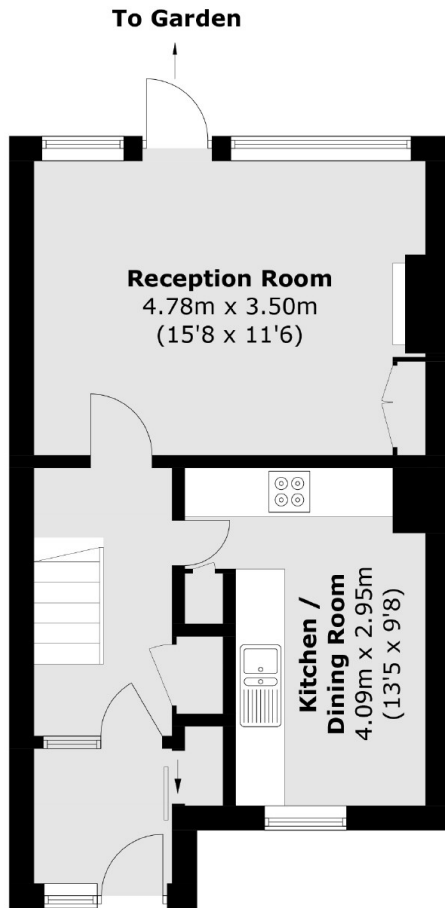
A bright three bedroom maisonette split over the ground and first floors. Brilliantly proportioned there is a separate kitchen, a spacious reception room and it has a large private south east facing garden.

Lorrimore Road offers exceptional transport links from Kennington station. There is easy access to Walworth Road and Elephant and Castle, offering a wide selection of bars, restaurants and shops.

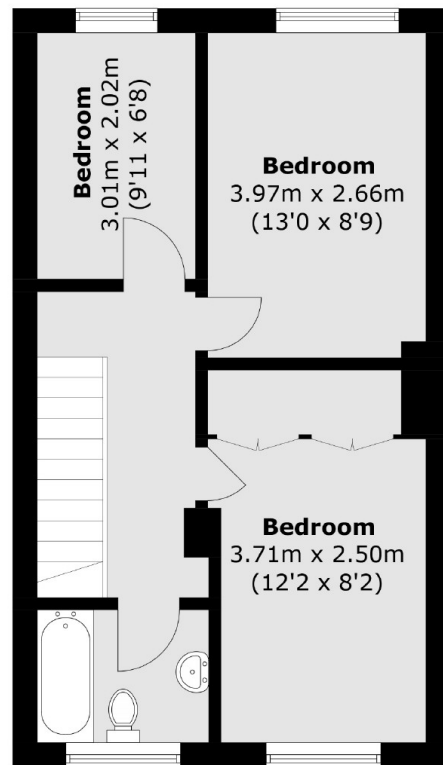
Features

- Split Level
- Three Bedrooms
- Large Private Rear Garden
- Kitchen/Dining Room
- Excellent Condition
- Great Location

Lorrimore Road, London, SE17



Ground Floor



First Floor

Total area (approx.): 80.6 sq. m (867.6 sq. ft)